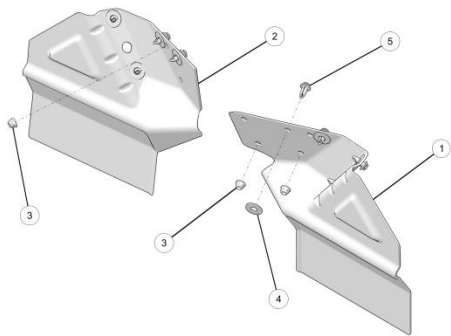


BEFORE YOU BEGIN

Read these instructions and check to be sure all parts and tools are accounted. Please retain these installation instructions for future reference.

This *MUDFLAP KIT* is exclusively designed for your vehicle. Please read the installation instructions thoroughly before beginning. Installation is easier if the vehicle is clean and free of debris.

KIT CONTENTS



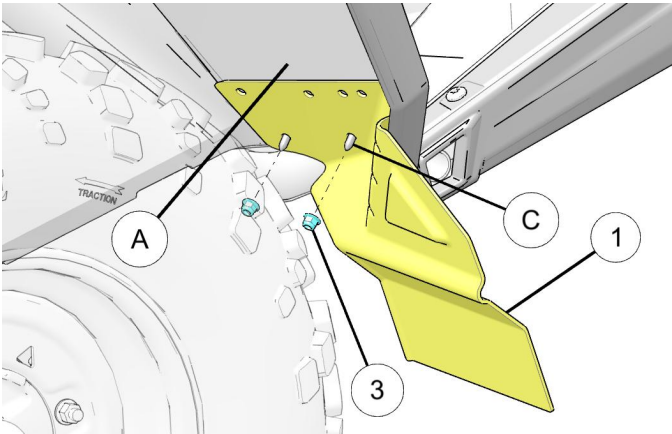
PART DESCRIPTION	QTY	REF
Mudflap, LH	1	1
Mudflap, RH	1	2
Hex Nut - M6 X 1.0	3	3
Washer - 0.390 X 0.940 X 0.060, Flange	8	4
Tuflok Rivet - 0.315 - 0.325 X 0.787	8	5

TOOLS REQUIRED

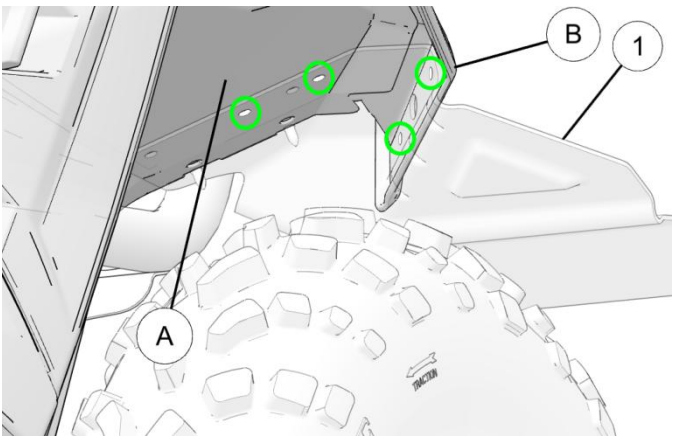
- Safety Goggles
- 5/16" Drill Bit Set
- Torx Set
- 10mm Wrench

INSTALLATION INSTRUCTIONS

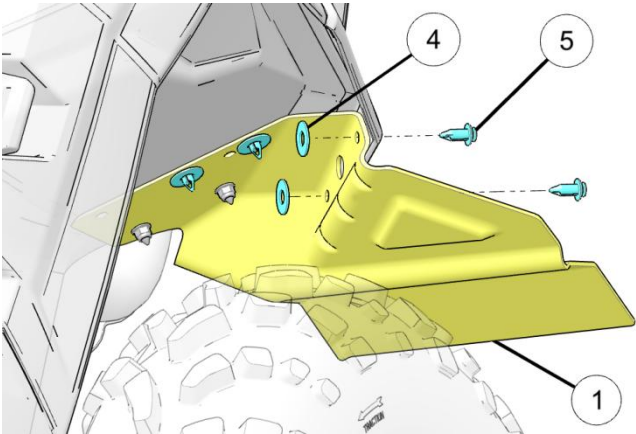
1. Shift vehicle transmission into "PARK". Turn key to "OFF" position and remove from vehicle.
2. Align two holes on LH mudflap ① with LH floor panel screws (C) as shown. Install LH mudflap ① using two nuts ③.



3. Using LH mudflap ① as template, drill two holes on floor panel (A) and two holes on rocker panel (B) at driver's side of the vehicle as shown.



4. Fix the LH mudflap ① by installing four tuflok rivets ⑤ and washers ④ as shown.



5. Repeat Steps 2-4 to install the RH mudflap ② on passenger side of the vehicle.

Mudflap Kit for Polaris ACE

