

# LED Accent Lights for Polaris RZR PRO XP/PRO R/PRO S 2025+



ZP-YJ-030502-049

## BEFORE YOU BEGIN

Read these instructions and check to be sure all parts and tools are accounted for. Please retain these installation instructions for future reference.

## IMPORTANT

The LED Accent Lights are exclusively designed for your vehicle. Please read the installation instructions thoroughly before beginning. Installation is easier if the vehicle is clean and free of debris. For your safety, and to ensure a satisfactory installation, perform all installation steps correctly in the sequence shown.

## INSTALLATION INSTRUCTIONS

Note: Shift vehicle transmission into "PARK". Turn key to "OFF" position and remove from vehicle.

1. Product picture



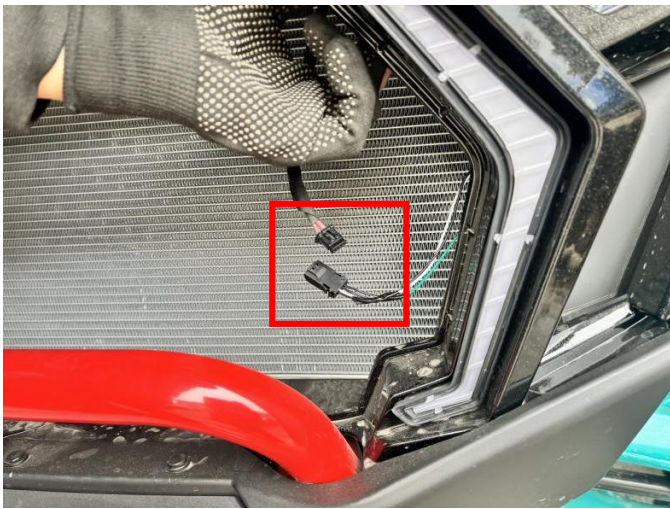
2. First, remove the front grille of the original vehicle. Then, unscrew the iron nuts that fix the original accent lights. Finally, disconnect the wiring harness connectors of the original accent lights and remove the accent lights. As shown in the picture:





# LED Accent Lights for Polaris RZR PRO XP/PRO R/PRO S 2025+

ZP-YJ-030502-049



3. Take out the new accent light, re-connect the wiring harness plug-ins of the new accent light, and then use the matching iron nuts to fix the new accent light on the original vehicle (the other side can be replaced and installed in the same way), and finally reinstall the original front grille of the vehicle. As the picture shows:  
**Note:** The new accent lights have a steering function, which can be connected by yourself as needed.



4. The installation is complete.

# LED Accent Lights for Polaris RZR PRO XP/PRO R/PRO S 2025+

ZP-YJ-030502-049



**Note:** Please refer to the installation video in the Amazon listing before your installation, or contact the seller for the installation video.