

Rear View Side Mirrors for Honda Pioneer 520

SAUTVS®

ZP-YJ-030905-032

BEFORE YOU BEGIN

Read these instructions and check to be sure all parts and tools are accounted. Please retain these installation instructions for future reference.

This *side mirror* is exclusively designed for your vehicle. Please read the installation instructions thoroughly before beginning. Installation is easier if the vehicle is clean and free of debris.

PRODUCT AND ACCESSORIES



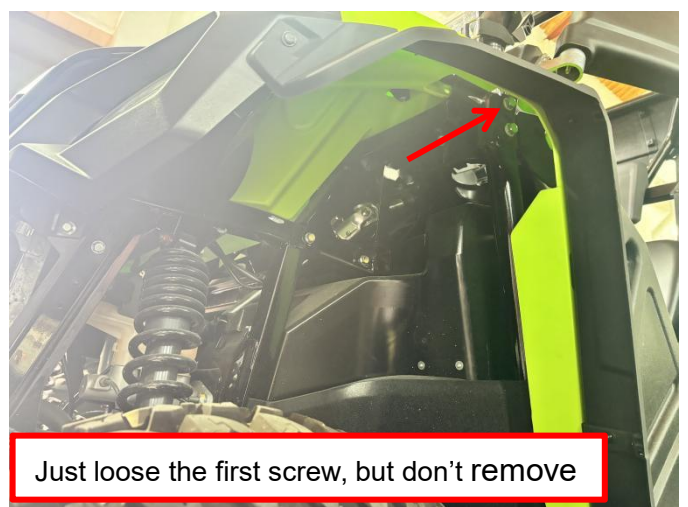
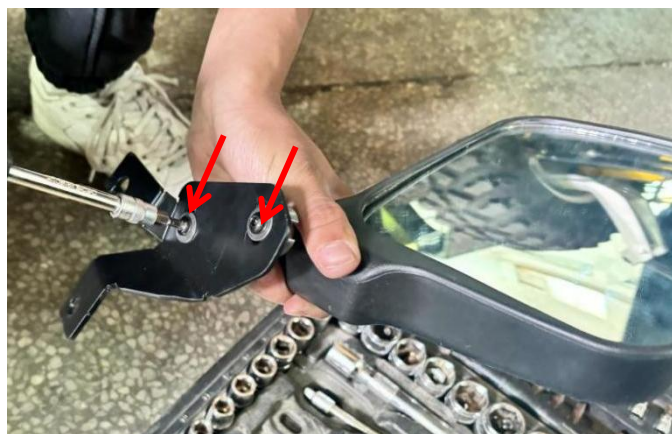
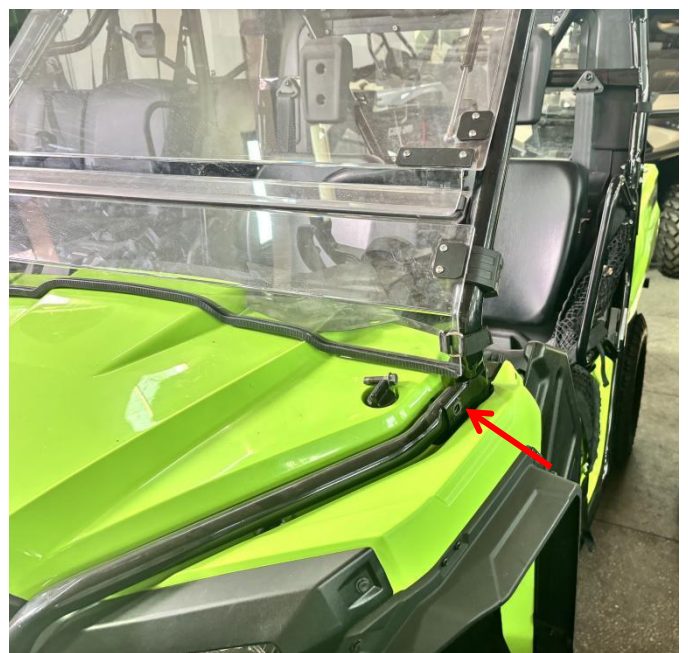
INSTALLATION INSTRUCTIONS

1. Shift vehicle transmission into "PARK". Turn key to "OFF" position and remove from vehicle.

2. Assemble the side mirror with the mounting bracket using the provided screws and nuts.

Note: Distinguish the left and right sides of the side mirror mounting bracket.

3. Remove the fixing screw from the vehicle's A-pillar. Then loosen the screw located above the inner side of the front fender (Do not remove it and just loosen it to leave some space.)



4. Install the assembled mirror unit to the vehicle: Hook one end of the mirror bracket onto the screw that was just loosened, and secure the other end with the original A-pillar screw. After adjusting the angle of the side

Rear View Side Mirrors for Honda Pioneer 520

SAUTVS

ZP-YJ-030905-032

mirror, tighten the screw that was just loosened.
(Repeat the same procedure for the opposite side mirror installation.)



Note: Please refer to the installation video in the Amazon listing before your installation, or contact the seller for the installation video.



5. Installation completed!

