



# Smart DRL Fang Lights for Polaris RZR XP 1000 (2014-2018)

## Installation Instructions

### Before You Begin

- Carefully read through this manual to ensure the product is intact and all accessories are included.
- Keep this manual for future reference after installation.
- Watch the installation video on the product page before proceeding.
- Ensure the vehicle is clean and free of debris to facilitate installation.

If you encounter any issues, contact the seller's customer service or scan the QR code on the right for assistance.



### Warning

- **Park the vehicle in a safe, spacious area, turn off the engine, and remove the ignition key before beginning installation..**
- **We are not liable for any injuries or accidents during installation.**

App Pairing  
Verification Code

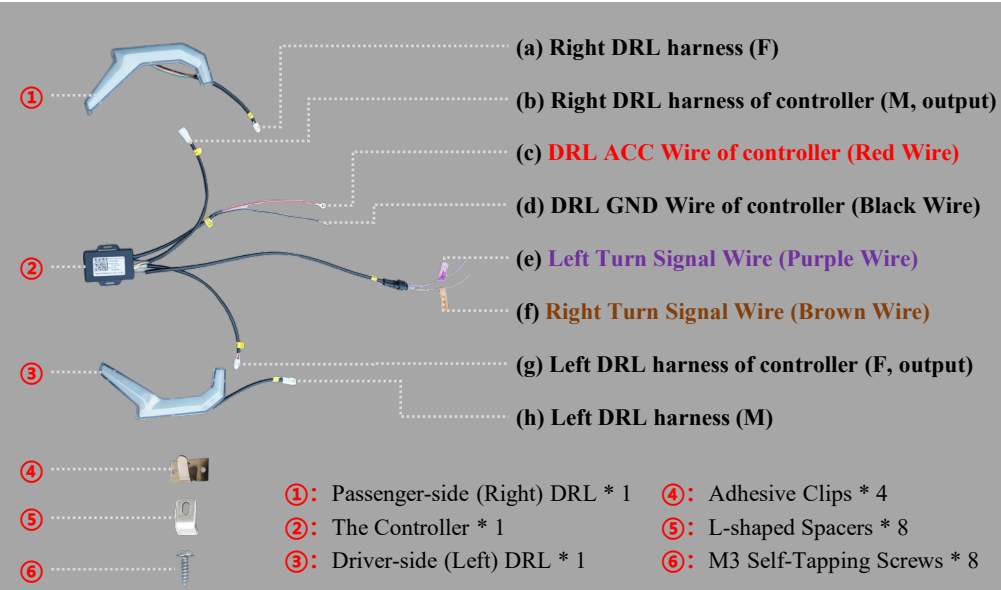
**925328**

### Note

- This product has a built-in turn signal function. To activate it, you must install a **user-provided** turn signal wiring harness kit before installation.
- Refer to the image on the right for the turn signal wiring harness kit.



# Product List & Schematic



## Wiring Instructions (Without Turn Signals)

- Connect (a) to (b), and connect (h) to (g).
- Attach (c) to the vehicle's ACC terminal and (d) to the GND terminal.
- If turn signal functionality is enabled, connect the left/right turn signal wires (purple/brown) to the controller's corresponding wire.

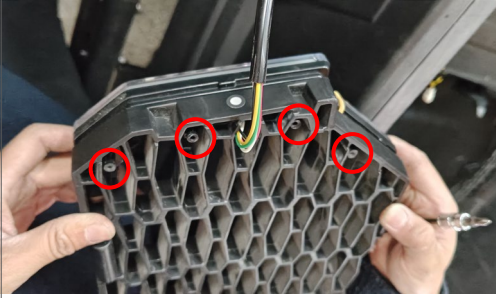
## Installation Steps

### Step 1: Remove the Front Grille



- Release the 2 upper tabs on the grille, tilt it outward slightly, then lift to disengage the lower tabs and remove the grille.

## Step 2: Install the New DRLs

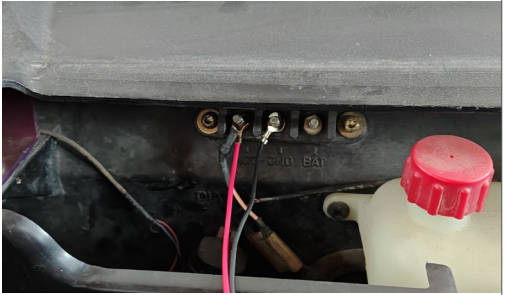


- Align the DRLs with the holes on the grille edge and secure them using the L-shaped spacers (Accessory ⑤) and M3 self-tapping screws (Accessory ⑥).

### Note:

- Carefully route the DRL harnesses through the grille holes during installation.
- Each side (left/right) has 4 mounting points. Use 1 spacer and 1 screw per point.

## Step 3: Connect DRL Wires of controller to Vehicle Terminals



- Remove the engine hood cover by twisting the two knobs.
- Connect the controller's red wire (ACC) to the vehicle's ACC terminal and the black wire (GND) to the GND terminal. Secure with the original nuts.

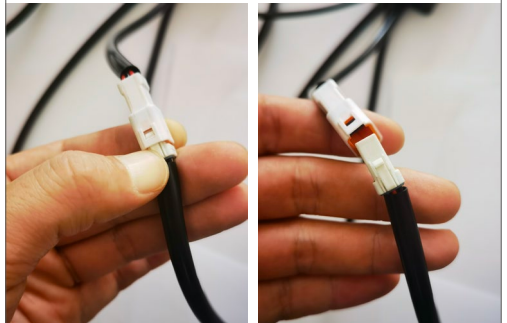
## Step 4: Connect DRL to the controller



- Simply plug the connector in to connect DRLs and controller.
- Attach the controller to a suitable location.
- Reinstall the Front Grille.

### Note:

- DRL-to-controller harnesses use paired connectors. Match M/F connectors correctly.
- To disconnect, press the M connector's latch downward and pull (fig.below).



**Tips:** Use insulation tape or cable ties to organize loose wires and prevent damage.



# Using the APP to Control the Device

## Download and Install the APP

Search for "XLightShow" in the app store or scan the QR code below to download and install the XLightShow APP.



## Adding/Connecting a Device

- Enable Bluetooth on your smartphone.
- Turn on the device and stay within 5 meters of it.
- Open the APP and tap the "+" on the "My Devices" page, then follow the prompts to complete the Bluetooth pairing with the device.

## Device name for Bluetooth pairing

- **14-18 RZR XP 1000 Fang Lights**

- ※ ① During use, the APP will request necessary permissions (such as scanning for nearby devices, microphone access, etc.). Please grant these permissions.
- ② This product requires enhanced verification during Bluetooth pairing (enter a 6-digit verification code), which is: **925328**.

## APP Features Overview

1. **Device Management:** Long press on a device to rename, group, or delete it.
2. **Group Management:** It is recommended to group similar type or model devices together to better display group characteristic icons.
3. **Device Control:** Tap on the device you want to control to enter its settings page, where you can choose from various control modes.
  - **Startup Animation:** Offers various startup animation effects; select an animation to apply to the device.
  - **DRL/Color:** Provides a color palette and quick color selection to change the displayed color of the device.
  - **Smart Scene:** Choose appropriate scene animations for different contexts to display varying effects on the device.
  - **Music Synchronization:** Collects audio from the smartphone or device microphone and displays effects based on the audio rhythm.
4. **Device Group Management:** Allows unified control over multiple devices.

## Device Group Control Management

- If you need to manage both the left and right headlights simultaneously (such as setting DRL light colors, Smart Scenes, Music Synchronization), you should use the group control feature. This involves selecting both the left and right headlights in the APP and creating a group control for unified management.
- For detailed instructions on using the group control function and APP, please refer to the "XLightShow User Manual".

- ※ In the group control "Music" mode, if the lighting effects are inconsistent, tap "Synchronize Devices Lighting Display Effect" in the APP.

## Warning

- In the "Music" mode of the APP, the "Music sync with high & low beams" feature is provided for the headlights series products. Please do not activate this feature while driving!