

Combined Full Windshield for Yamaha Wolverine X2 X4

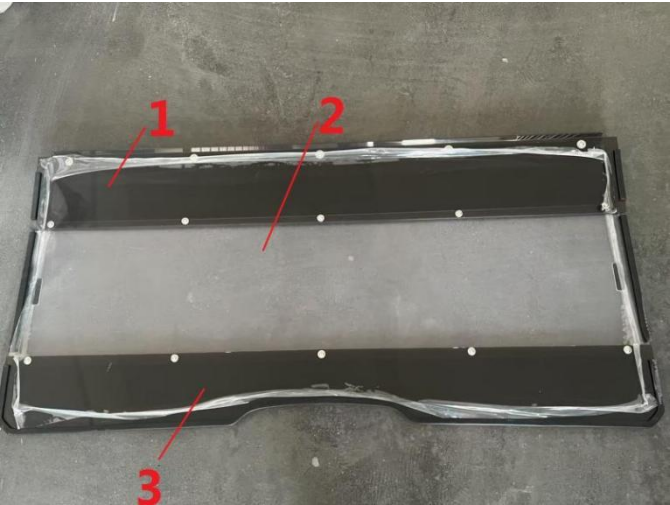
ZP-YJ-031111-011

BEFORE YOU BEGIN

Read these instructions and check to be sure all parts and tools are accounted. Please retain these installation instructions for future reference.

The Combined Full Windshield Kit is exclusively designed for your vehicle. Please read the installation instructions thoroughly before beginning. Installation is easier if the vehicle is clean and free of debris. For your safety, and to ensure a satisfactory installation, perform all installation steps correctly in the sequence shown.

KIT CONTENTS



REF	QTY	PART DESCRIPTION
1	1	Windshield,part1
2	1	Windshield,part2
3	1	Windshield,part3
4	2	Clamp Assembly
5	6	Ribbon
6	10	M6*20 hexagon screw
7	10	M6 Flat pad
8	10	M6 lock nut



ASSEMBLY TIME

Approximately 10 minutes.

INSTALLATION INSTRUCTIONS

- Shift vehicle transmission into “PARK”. Turn key to “OFF” position and remove from vehicle.
- Assemble windshields 1, 2, and 3 with 10pcs M6*20 hexagon screws,10pcs M6 flat pads and 10pcs M6 lock nuts.

- Tighten the screws on the iron bracket, then fix the Full windshield to the frame with two clamps and six ribbons.

Combined Full Windshield for Yamaha Wolverine X2 X4

ZP-YJ-031111-011



Note: Please refer to the installation video in the Amazon listing before your installation, or contact the seller for the installation video.