

Storage Cargo Bin for Sea-Doo Spark 2024+

ZP-YJ-030608-022

SAUTVS®

BEFORE YOU BEGIN

Read these instructions and check to be sure all parts and tools are accounted. Please retain these installation instructions for future reference.

IMPORTANT

This FRONT STORAGE CARGO BIN KIT is exclusively designed for your vehicle. Please read the installation instructions thoroughly before beginning. Installation is easier if the vehicle is clean and free of debris.

INSTALLATION INSTRUCTIONS

1. Shift vehicle transmission into "PARK". Turn key to "OFF" position and remove from vehicle.
2. Product image.



3. First, remove the side panels and front panel of the Spark (remove the other side in the same way).

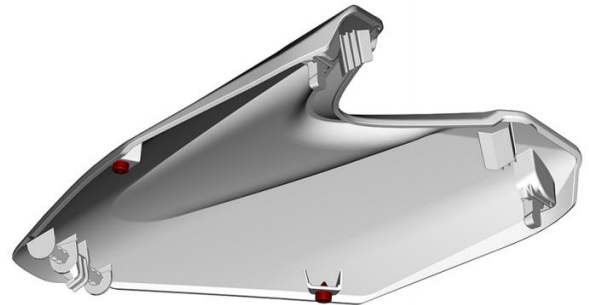
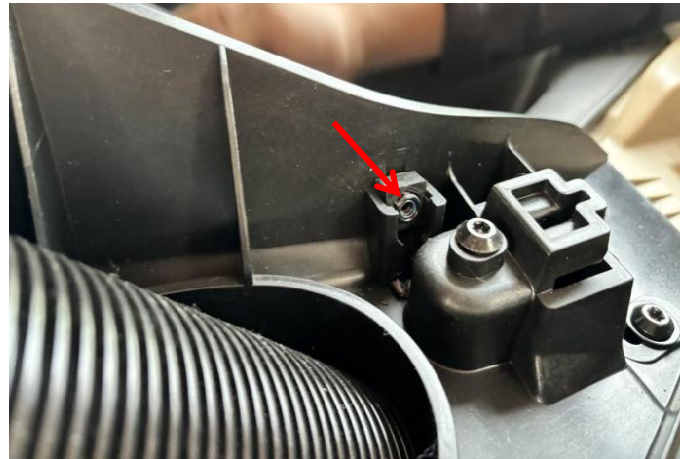


Storage Cargo Bin for Sea-Doo Spark 2024+

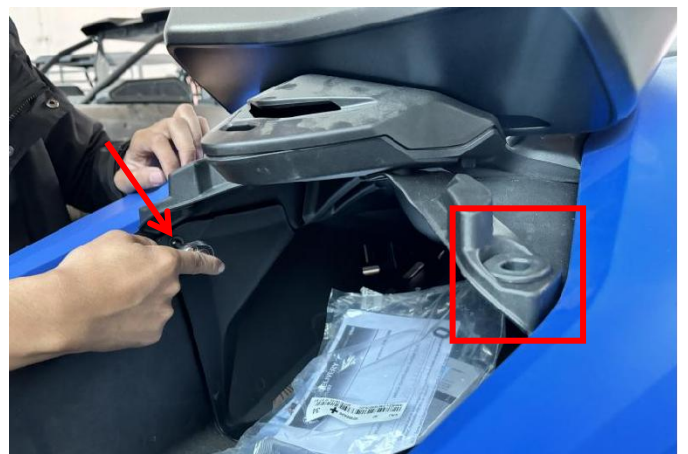
SAUTV5

ZP-YJ-030608-022

4. Remove the two screws from the original vehicle interior, then install the lower components on both sides of the deflector hood onto the vehicle. Secure them using the original vehicle screws and snap fasteners (install the other side in the same manner).



5. Use the screws and nuts provided with the product (the nuts must be placed in the limit seat for use) to secure the upper kit on both sides of the deflector cover to the vehicle, and snap the O-ring rubber ring into place on the kit (install the other side in the same way).

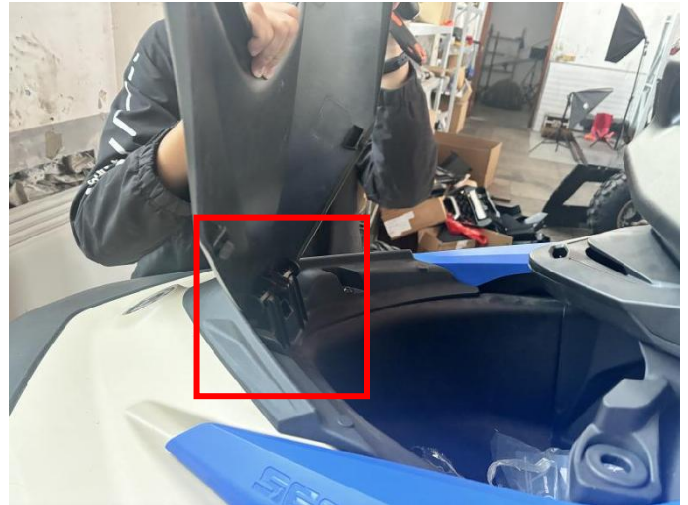
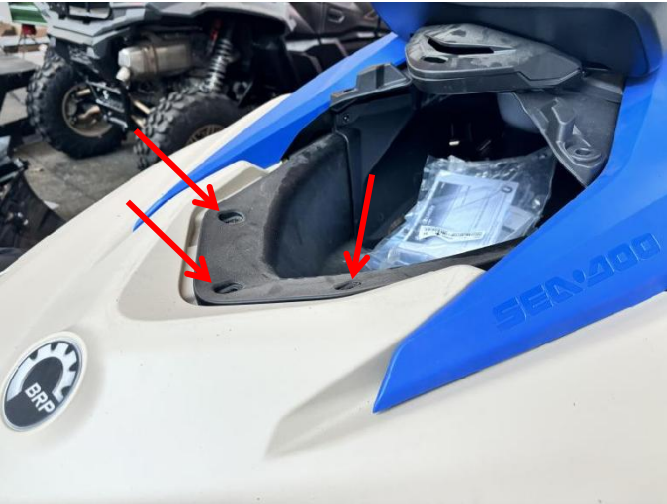


Storage Cargo Bin for Sea-Doo Spark 2024+

SAUTV5

ZP-YJ-030608-022

6. Remove the screws from the front lip of the vehicle's original storage box, then place the base of the deflector kit on the front lip, reattach the screws you just removed, and finally snap the cover of the deflector kit onto the base.



7. Installation complete.



Note: Please refer to the installation video in the Amazon listing before your installation, or contact the seller for the installation video.