

LED Dash Light Assembly for Polaris RZR PRO XP/R/S 2025+



BEFORE YOU BEGIN

Read these instructions and check to be sure all parts and tools are accounted for. Please retain these installation instructions for future reference.

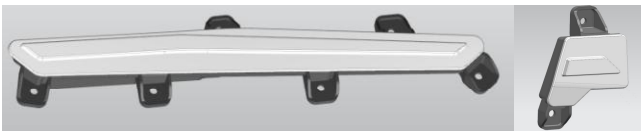
IMPORTANT

The *LED Dash Light Assembly* is exclusively designed for your vehicle. Please read the installation instructions thoroughly before beginning. Installation is easier if the vehicle is clean and free of debris. For your safety, and to ensure a satisfactory installation, perform all installation steps correctly in the sequence shown.

INSTALLATION INSTRUCTIONS

Note: Shift vehicle transmission into "PARK". Turn key to "OFF" position and remove from vehicle.

Product picture



1. First, remove the original vehicle hood, then remove the original instrument panel storage cover and the decorative outer frame of the display screen. As shown in the picture:



LED Dash Light Assembly for Polaris RZR PRO XP/R/S 2025+



2. Remove the original instrument panel. As shown in the picture:



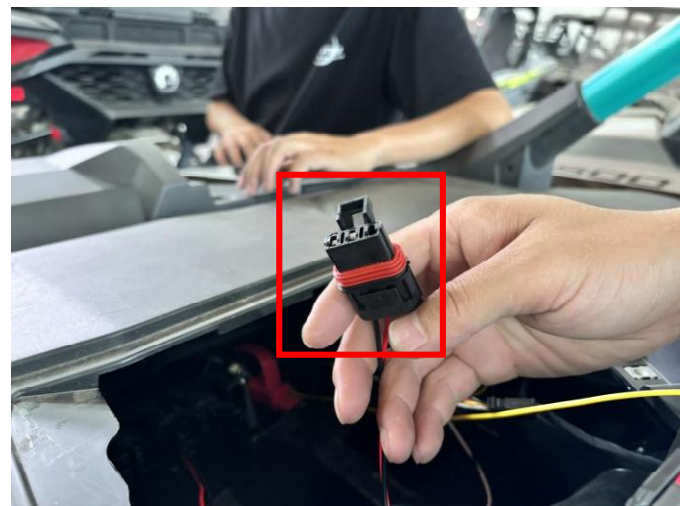
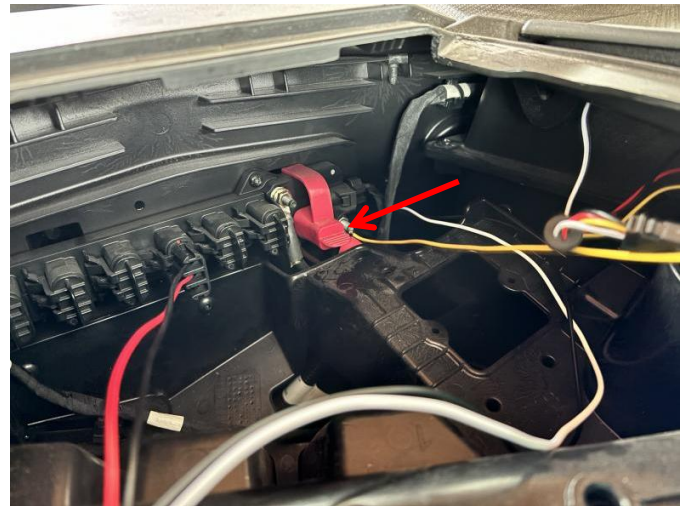
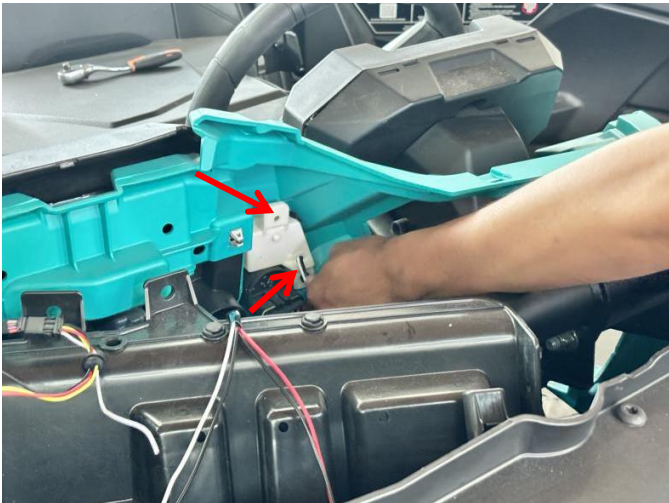
3. Remove the screws fixing the original vehicle dash lights, disconnect their wiring harness plug-ins, and then take out the original vehicle dash lights. After that, replace and install the new dash lights, and fix them with the original vehicle screws (reconnect the wiring harness plug-ins properly). As shown in the picture:



LED Dash Light Assembly for Polaris RZR PRO XP/R/S 2025+

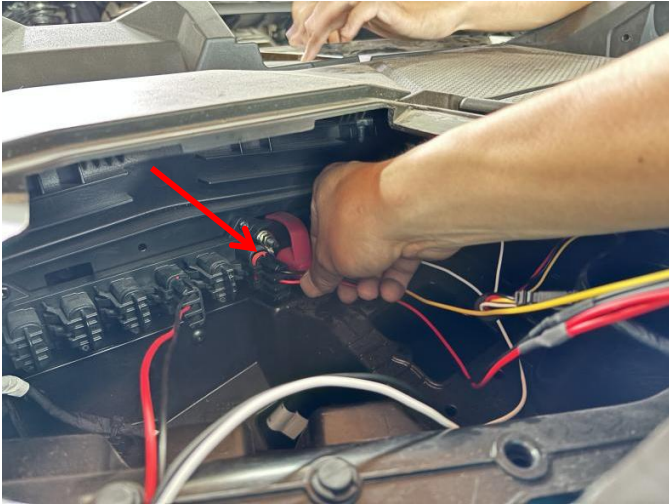


Connect the wire harness with the terminal copper round to the original vehicle terminal post. Then, unplug one reserved expansion plug-in on the original vehicle, and connect the corresponding wire harness plug-in on the adapter cable with it. Finally, connect the remaining two types of wire harness plug-ins with the dash lights respectively. After completion, install the previously removed parts back to their original positions. As shown in the picture:

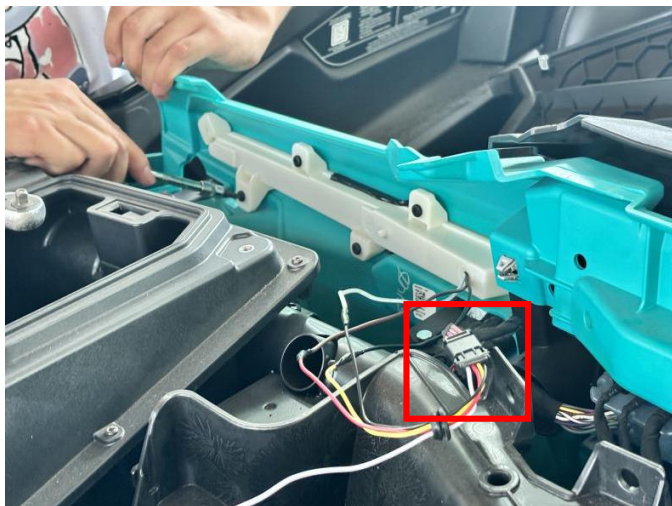


4. For vehicle models that do not have original dash lights in the original vehicle, we have an extra adapter cable. The specific installation operations are as follows: Prepare the adapter cable matched with the product.

LED Dash Light Assembly for Polaris RZR PRO XP/R/S 2025+



Note: Please refer to the installation video in the Amazon listing before your installation, or contact the seller for the installation video.



5. The installation is complete.

