

Turbo Hood with LED Spotlight for Polaris RZR PRO XP/R 2025+



ZP-YJ-030503-189

BEFORE YOU BEGIN

Read these instructions and check to be sure all parts and tools are accounted for. Please retain these installation instructions for future reference.

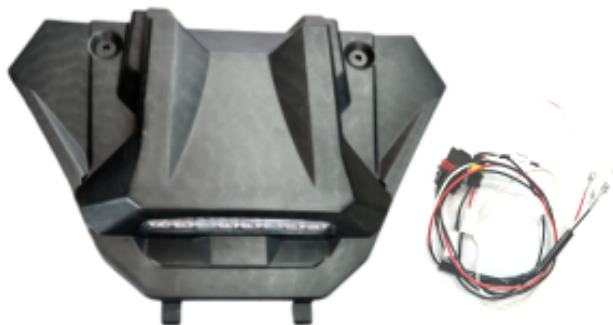
IMPORTANT

The *Turbo Hood with LED Spotlight* is exclusively designed for your vehicle. Please read the installation instructions thoroughly before beginning. Installation is easier if the vehicle is clean and free of debris. For your safety, and to ensure a satisfactory installation, perform all installation steps correctly in the sequence shown.

INSTALLATION INSTRUCTIONS

Note: Shift vehicle transmission into "PARK".
Turn key to "OFF" position and remove from vehicle.

Product picture



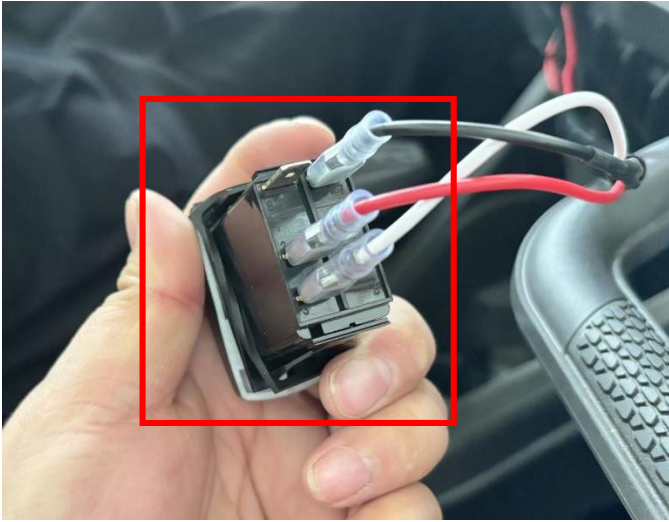
1. First, remove the original vehicle hood, then return to the driver's cab and remove the dashboard storage compartment. As shown in the picture:



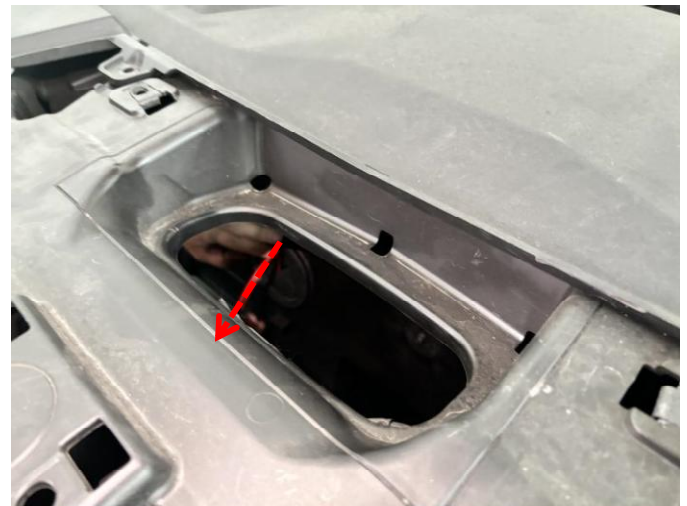
2. Connect the included adapter harness to the control switch in the sequence shown in the picture. Then route the excess wiring through the switch panel's access hole to the vehicle's original wiring terminal. Remove the protective cover from the vehicle's expansion socket, properly align and connect the 3-pin adapter harness, then securely snap the control switch into place on the panel. As shown in the picture:

Turbo Hood with LED Spotlight for Polaris RZR PRO XP/R 2025+

ZP-YJ-030503-189



3. Route the 2-pin connector harness through the wiring access hole near the terminal post to the front hood area, then connect it to the corresponding harness connector on the hood light. Finally, reinstall and secure the hood in place, and reassemble the previously removed dashboard storage compartment. As shown in the picture:



Turbo Hood with LED Spotlight for Polaris RZR PRO XP/R 2025+

ZP-YJ-030503-189



Note: Please refer to the installation video in the Amazon listing before your installation, or contact the seller for the installation video.



4. The installation is complete.

