

# Full Chassis Glide and Swing Arm Skid Plate for Yamaha Raptor 700



ZP-YJ-031103-020

## BEFORE YOU BEGIN

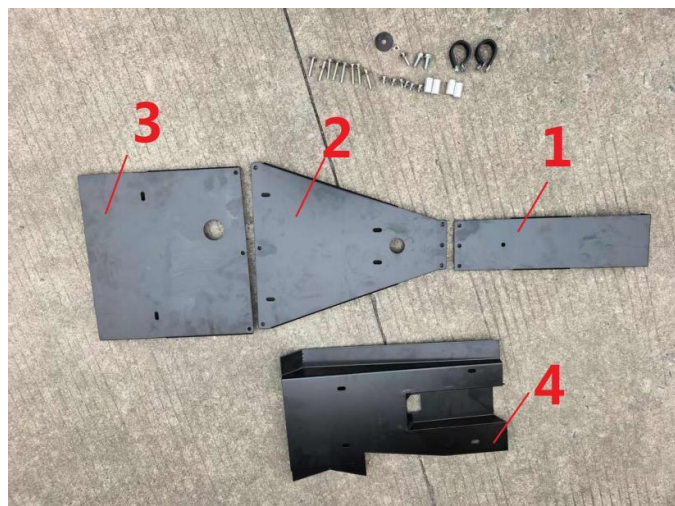
Read these instructions and check to be sure all parts and tools are accounted for. Please retain these installation instructions for future reference.

These Full Chassis Glide and Swing Arm Skid Plate are exclusively designed for your vehicle. Please read the installation instructions thoroughly before beginning. Installation is easier if the vehicle is clean and free of debris. For your safety, and to ensure a satisfactory installation, perform all installation steps correctly in the sequence shown.

## INSTALLATION INSTRUCTIONS

Note: Shift vehicle transmission into "PARK". Turn key to "OFF" position and remove from vehicle.

1. Assemble components 1, 2, and 3 using six M6x12 hex socket head screws and six M6 washers as shown in the diagram.



four M6 flat washers, and four aluminum spacers as shown in the diagram.



3. Secure the front end of the skid plate to the front frame using two M8x25 flange bolts with integrated washers as shown in the diagram.



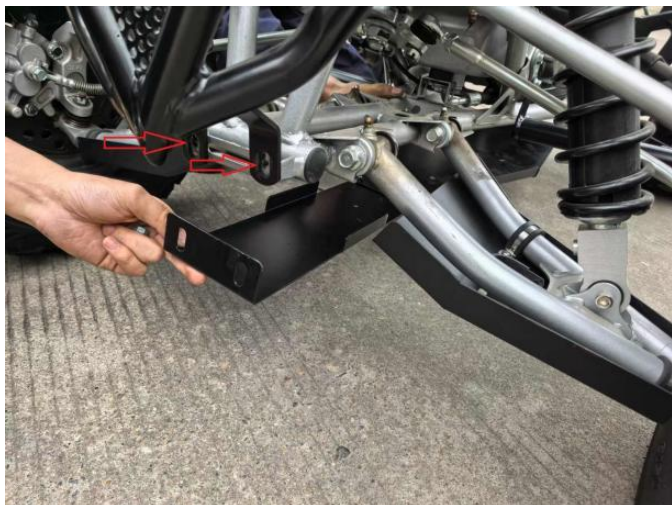
2. Mount component 4 to the rear chassis using four M6x40 hex socket head screws,



# Full Chassis Glide and Swing Arm Skid Plate for Yamaha Raptor 700



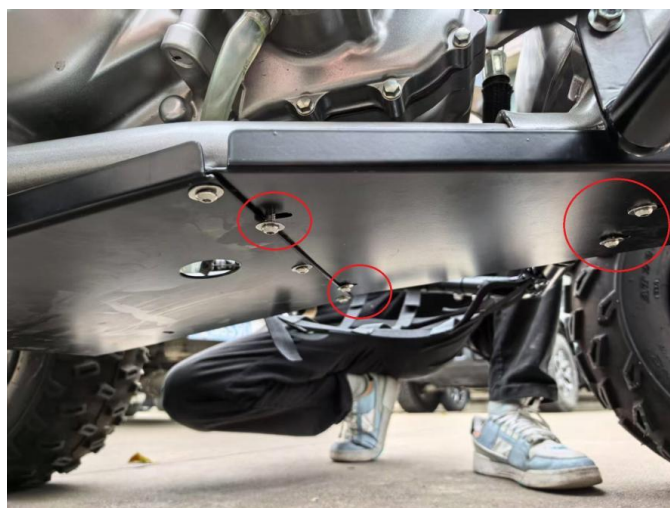
ZP-YJ-031103-020



5. Fix the lower guard plate to the bottom of the frame with four M6x35 hex socket head screws and four M6 washers as shown in the diagram.



4. Fasten the center section of the skid plate with one M6x35 hex bolt, one M6 large flat washer (placed on top), one M6 small flat washer (placed below), and one M6 nut as shown in the diagram.



6. Fix both ends of the lower guard plate to the underframe of the vehicle using two mounting clamps and two M6x25 hex socket head screws. Finally, fully tighten all fasteners to complete the installation as shown in the diagram.

# Full Chassis Glide and Swing Arm Skid Plate for Yamaha Raptor 700



ZP-YJ-031103-020

---



**Note:** Please refer to the installation video in the Amazon listing before your installation, or contact the seller for the installation video.