

Rear Windshield for Honda Pioneer 520

SAUTVS®

ZP-YJ-030911-021

BEFORE YOU BEGIN

Read these instructions and check to be sure all parts and tools are accounted. Please retain these installation instructions for future reference.

This *Rear Windshield* is exclusively designed for your vehicle. Please read the installation instructions thoroughly before beginning. Installation is easier if the vehicle is clean and free of debris.

PRODUCT AND ACCESSORIES



nuts.

Note: The four screws circled should be M6*20.

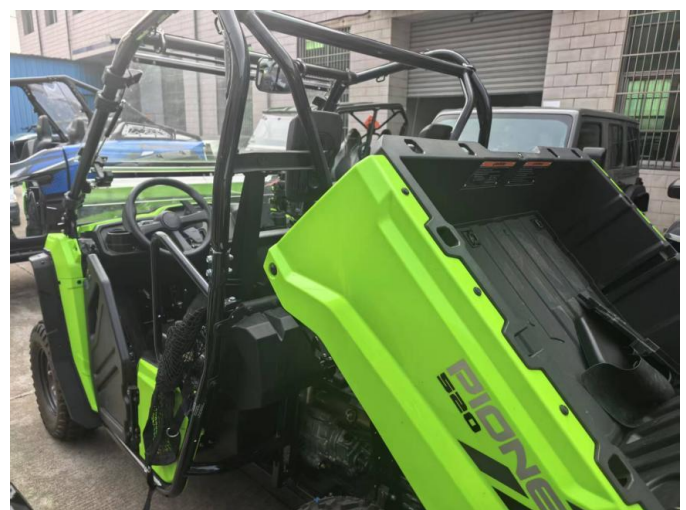


INSTALLATION INSTRUCTIONS

1. Shift vehicle transmission into "PARK". Turn key to "OFF" position and remove from vehicle.
2. Combine the four plastic parts with eight 4*12 self-tapping screws, as shown in the figure:



4. Lift the bed cargo and remove the plastic clips at both ends of the rear side of the frame for future use. Stick two sponge strips to the position of the rear pillar, as shown in the picture:



3. Install the transparent board onto the plastic part with ten M6*16 hex socket screws, four M6*20 hex socket screws and fourteen M6 lock

Rear Windshield for Honda Pioneer 520

ZP-YJ-030911-021

SAUTVS®



7. Fix the rear windshield to the rear pillar with four small straps, as shown in the illustration:



5. Fix the lower end of the rear windshield with two sets of plastic snap fasteners that just removed, as shown in the figure:



6. Remove the seat and fix the lower end of the rear windshield to the frame with two small straps.

8. Fix the transparent board to the middle of the rear pillar with four M6*16 hex socket screws, two M6 flat washers and four nuts through two iron brackets, and the installation is completed.



Rear Windshield for Honda Pioneer 520

ZP-YJ-030911-021

SAUTV^{VS}



Note: Please refer to the installation video in the Amazon listing before your installation, or contact the seller for the installation video.