

# Turbo Hood Scoop for Polaris General 1000

ZP-YJ-030503-9137



## BEFORE YOU BEGIN

Read these instructions and check to be sure all parts and tools are accounted for. Please retain these installation instructions for future reference.

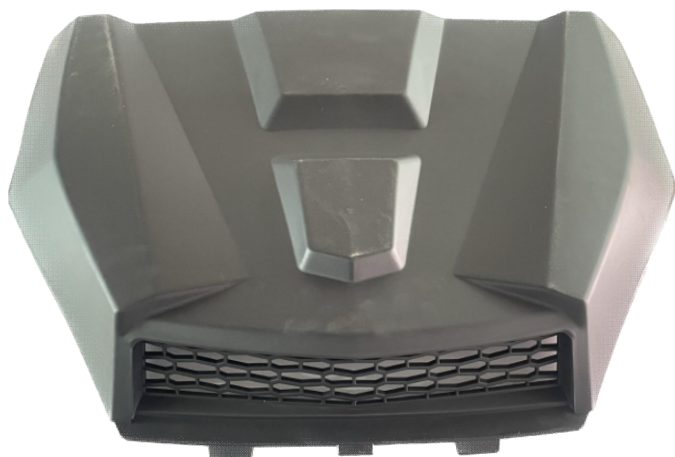
## IMPORTANT

The *Turbo Hood Scoop* is exclusively designed for your vehicle. Please read the installation instructions thoroughly before beginning. Installation is easier if the vehicle is clean and free of debris. For your safety, and to ensure a satisfactory installation, perform all installation steps correctly in the sequence shown.

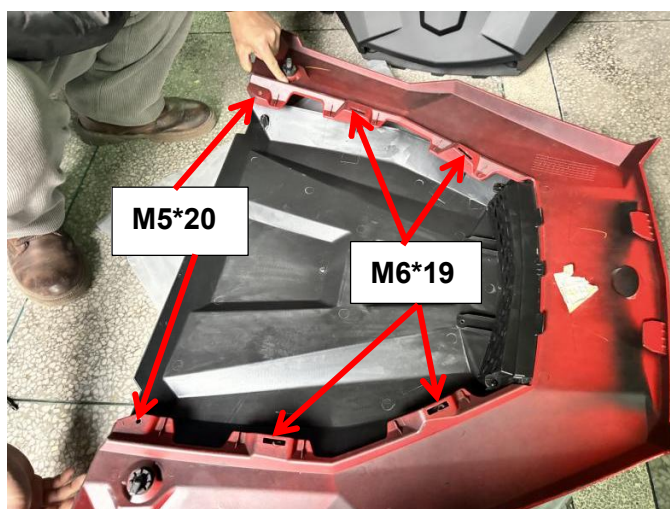
## INSTALLATION INSTRUCTIONS

Note: Shift vehicle transmission into "PARK". Turn key to "OFF" position and remove from vehicle.

Product picture



1. First remove the original hood scoop, replace and install the new inner hood, secure it with M5\*20 and M6\*19 self-tapping screws and washers, and then reattach the hood to the vehicle. As the picture shows:



2. Installation finished.



# Turbo Hood Scoop for Polaris General 1000



ZP-YJ-030503-9137

---



**Note:** Please refer to the installation video in the Amazon listing before your installation, or contact the seller for the installation video.