

Overhead Storage Tray for Club Car DS

ZP-YJ-041908-003

SAUTVS®

BEFORE YOU BEGIN

Read these instructions and check to be sure all parts and tools are accounted. Please retain these installation instructions for future reference.

This *Overhead Storage Tray* is exclusively designed for your vehicle. Please read the installation instructions thoroughly before beginning. Installation is easier if the vehicle is clean and free of debris.

PRODUCT

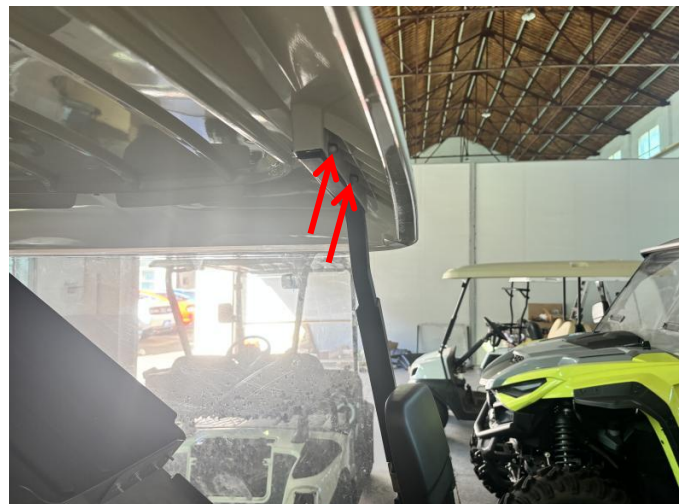


INSTALLATION INSTRUCTIONS

1. Shift vehicle transmission into "PARK". Turn key to "OFF" position and remove from vehicle.
2. Use the screws and nuts provided with the product to install the two metal brackets at both ends of the storage box. As shown in the figure.



3. Remove the fixing screws from the front roof support brackets of the original vehicle (both sides need to be removed), replace them with the longer screws provided with the product, then place the assembled storage box with the bracket between the two support rods, and finally reinstall the screws in place while securing the storage box bracket. As shown in the figure.



Overhead Storage Tray for Club Car DS

ZP-YJ-041908-003

SAUTVS®



Note: Please refer to the installation video in the Amazon listing before your installation, or contact the seller for the installation video.



4. The installation is complete.

