

# Overhead Storage Tray for YAMAHA G29

ZP-YJ-041108-004

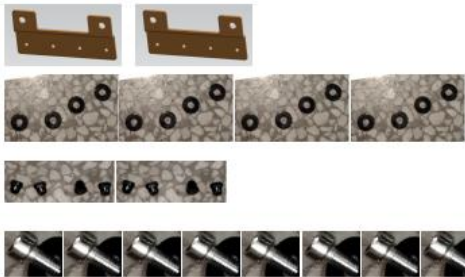
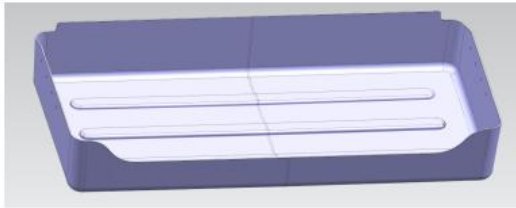
SAUTVS®

## BEFORE YOU BEGIN

Read these instructions and check to be sure all parts and tools are accounted. Please retain these installation instructions for future reference.

This *Overhead Storage Tray* is exclusively designed for your vehicle. Please read the installation instructions thoroughly before beginning. Installation is easier if the vehicle is clean and free of debris.

## PRODUCT



## INSTALLATION INSTRUCTIONS

1. Shift vehicle transmission into "PARK". Turn key to "OFF" position and remove from vehicle.
2. Use the screws and nuts provided with the product to install the two metal brackets at both ends of the storage box. As shown in the figure.



3. Remove the original screws from the rear of the roof and keep it for later use.

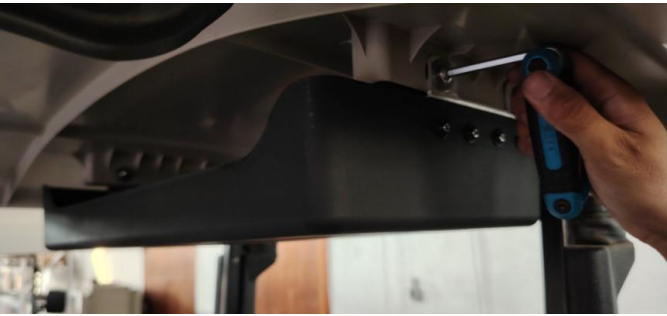


4. Use the original screws removed earlier to install the assembled storage box in the corresponding position and tighten the screws. Note: The side of the storage box with the notch should face the front of the vehicle.

# Overhead Storage Tray for YAMAHA G29

ZP-YJ-041108-004

SAUTVS®



5. The installation is complete.



**Note:** Please refer to the installation video in the Amazon listing before your installation, or contact the seller for the installation video.