

## BEFORE YOU BEGIN

Read these instructions and check to be sure all parts and tools are accounted. Please retain these installation instructions for future reference.

This *Dash Board Cover Assembly* is exclusively designed for your vehicle. Please read the installation instructions thoroughly before beginning. Installation is easier if the vehicle is clean and free of debris.

## PRODUCT



## INSTALLATION INSTRUCTIONS

1. Shift vehicle transmission into "PARK". Turn key to "OFF" position and remove from vehicle.
2. Use the self-tapping screws provided with the product to assemble the side storage covers and the dashboard into a complete unit. As shown in the figure:



3. First, remove the original steering wheel, gear handle, and decorative panels from the dashboard of the vehicle. Then, install the assembled dashboard onto the vehicle (temporarily unfixed), and properly install the vehicle's original keyhole and power indicator onto the dashboard. As shown in the figure:

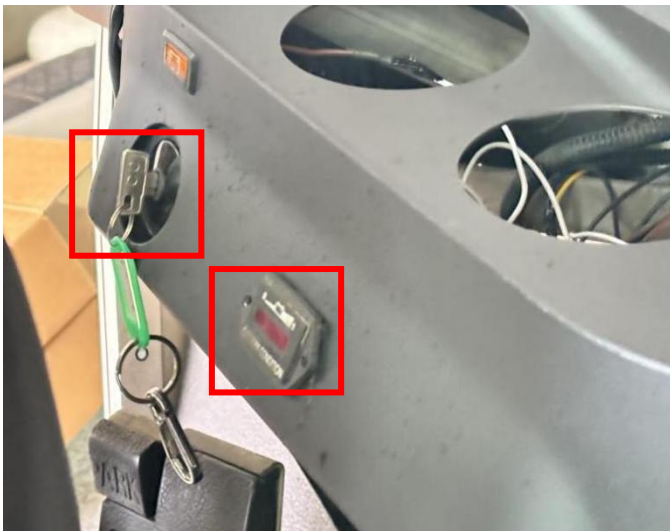
Note: 1. The hole for installing the power indicator light needs to be drilled by yourself, and the inside of the dashboard is marked with the drilling position.

Note: 2. The original power indicator light wire on the vehicle is too short to reach the dashboard length. You can cut it from the middle of the wire harness, then find two extension wires, and use them to extend it by twisting the copper strands together. Finally, ensure proper insulation protection at the connection points.





# Dash Board Cover Assembly for Club Car DS



5. Use the original self-tapping screws to reinforce the power indicator light and properly place the matching cup holders. Then, use a 3.2MM drill bit to drill holes in the vehicle sequentially according to the screw hole positions at the edge of the dashboard. After completion, use a M4 tap to thread the screw holes. Finally, use the matching screws to fix the dashboard. As shown in the figure.



Note: If you need to install our store's lights for the same vehicle model, you can refer to this step. If not, you can directly skip to the next step.

4. Prepare the drill bit, make a hole at any position on the dashboard, then use other tools to enlarge the hole to the appropriate size (just enough for the light switch to pass through), and finally install the control switch of the light into the hole. As shown in the figure.





# Dash Board Cover Assembly for Club Car DS



6. Finally, reinstall the steering wheel and gear shift handle, as shown in the figure.

Note: When installing the black protective rod, the positioning hole on it should be aligned with the hole on the control lever.



# Dash Board Cover Assembly for Club Car DS

7. The installation is complete.



**Note:** Please refer to the installation video in the Amazon listing before your installation, or contact the seller for the installation video.