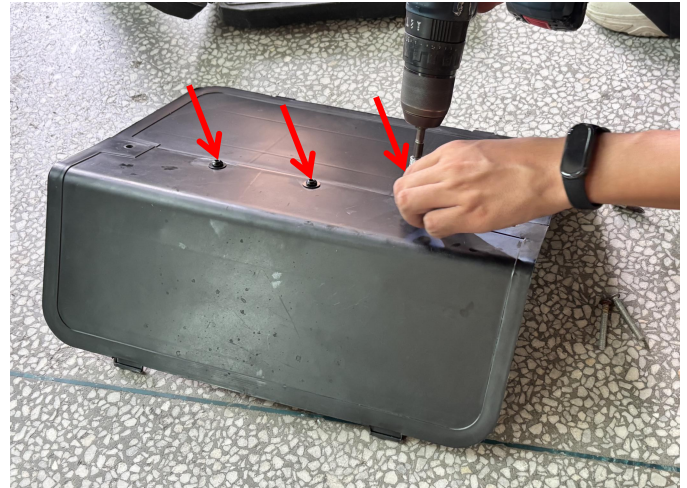


BEFORE YOU BEGIN

Read these instructions and check to be sure all parts and tools are accounted. Please retain these installation instructions for future reference.

This *Rear Access Panel* is exclusively designed for your vehicle. Please read the installation instructions thoroughly before beginning. Installation is easier if the vehicle is clean and free of debris.

PRODUCT

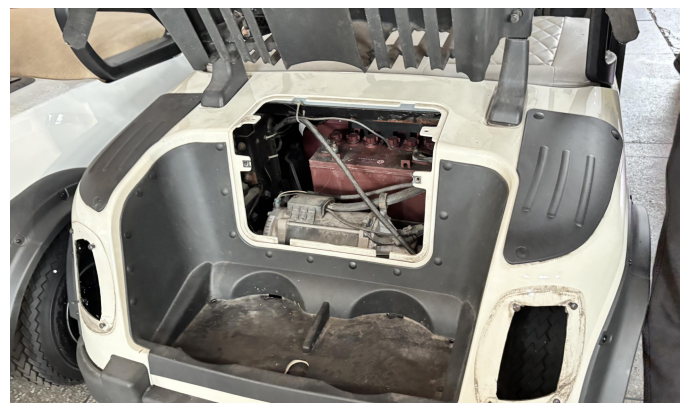


INSTALLATION INSTRUCTIONS

1. Shift vehicle transmission into "PARK". Turn key to "OFF" position and remove from vehicle.
2. Use the provided screws and nuts to assemble the separate cover plates into a complete unit. As shown in the figure:



3. Remove the original cover plate, replace it with the new one, and secure it using the original screws. As shown in the figure:



Rear Access Panel for E-Z-GO RXV



4. The installation is complete.



Note: Please refer to the installation video in the Amazon listing before your installation, or contact the seller for the installation video.