

A-Pillar LED Pod Lights for Yamaha YXZ1000R

BEFORE YOU BEGIN

Read these instructions and check to be sure all parts and tools are accounted. Please retain these installation instructions for future reference.

This *A-pillar LED Pod Light* is exclusively designed for your vehicle. Please read the installation instructions thoroughly before beginning. Installation is easier if the vehicle is clean and free of debris.

PRODUCT AND ACCESSORIES



INSTALLATION INSTRUCTIONS

1. Shift vehicle transmission into "PARK". Turn key to "OFF" position and remove from vehicle.
2. Distinguish the left and right sides of the mounting bracket of the pod light (Place the bracket at the A-pillar of the vehicle, and determine the left and right sides by comparing.) Secure the brackets to lights using provided screws and nuts.

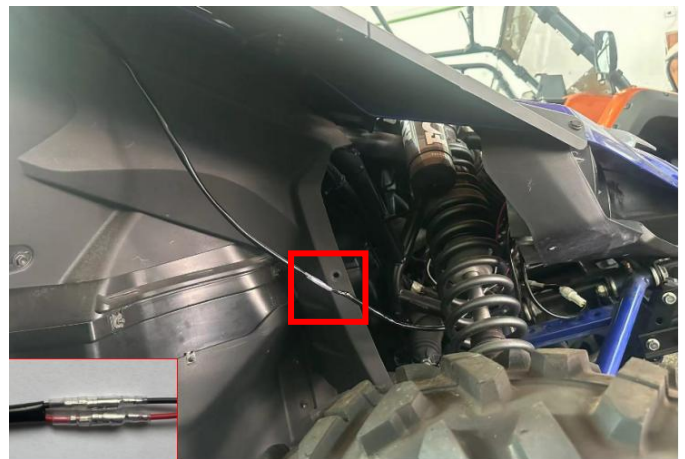
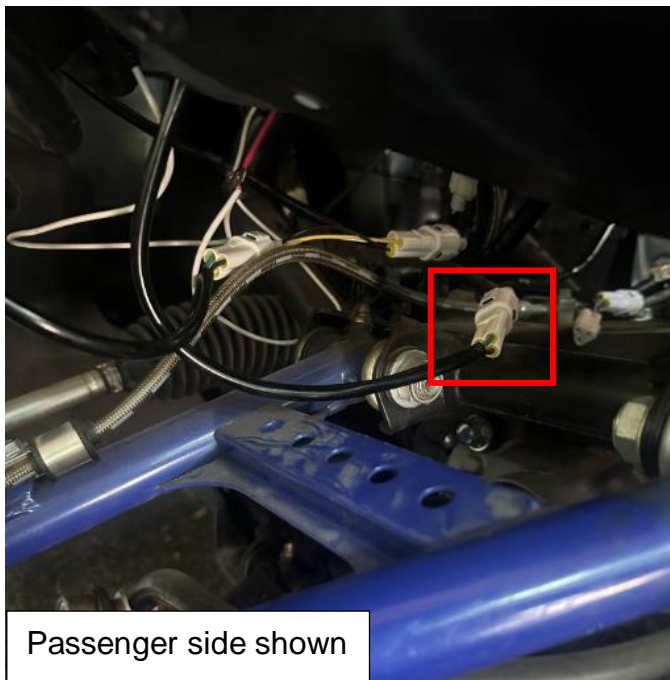


3. Unscrew the two fixing screws at the A-pillar. Re-pass provided screws to the A-pillar screw holes, and finally install the pod light bracket, adjust the angle of the pod light, and use nuts to lock it. (NOTE: Route light wiring harness through adjacent gaps to reach headlight before fixing light.)As the picture shows:



A-Pillar LED Pod Lights for Yamaha YXZ1000R

4. Then disconnect headlight wiring harness. Properly reconnect pod light wiring to both headlight and vehicle harness using matching connectors. As picture shown:



5. The installation is complete.

Note: Please refer to the installation video in the Amazon. listing before your installation, or contact the seller for the installation video.

