

Glove Box Door Lid for Sea-Doo Spark

ZP-YJ-030603-206

SAUTV5®

BEFORE YOU BEGIN

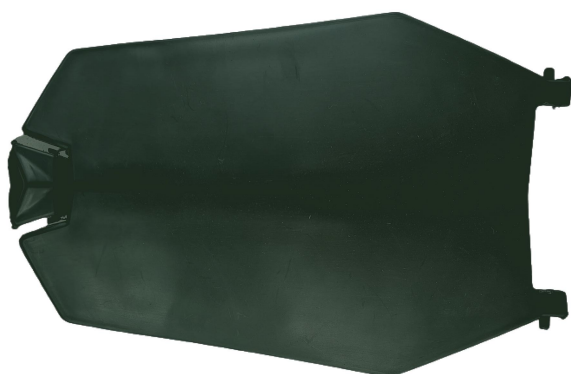
Read these instructions and check to be sure all parts and tools are accounted. Please retain these installation instructions for future reference.

IMPORTANT

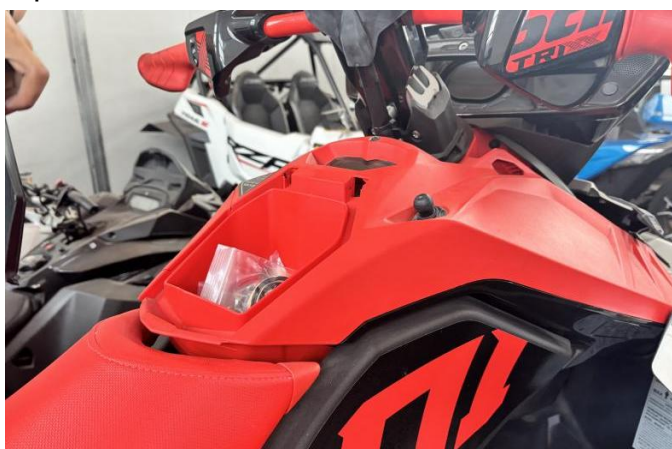
This GLOVE BOX DOOR LID KIT is exclusively designed for your vehicle. Please read the installation instructions thoroughly before beginning. Installation is easier if the vehicle is clean and free of debris.

INSTALLATION INSTRUCTIONS

1. Shift vehicle transmission into "PARK". Turn key to "OFF" position and remove from vehicle.
2. Product image.



3. Remove the original storage cover plate and replace it with a new one.



4. Installation complete.



Note: Please refer to the installation video in the Amazon listing before your installation, or contact the seller for the installation video.