

Under Seat Storage Box for Kawasaki Mule 4010



ZP-YJ-031008-0030

BEFORE YOU BEGIN

Read these instructions and check to be sure all parts and tools are accounted for. Please retain these installation instructions for future reference.

The Under Seat Storage Box is exclusively designed for your vehicle. Please read the installation instructions thoroughly before beginning. Installation is easier if the vehicle is clean and free of debris. For your safety, and to ensure a satisfactory installation, perform all installation steps correctly in the sequence shown.

INSTALLATION INSTRUCTIONS

Note: Shift vehicle transmission into "PARK".
Turn key to "OFF" position and remove from vehicle.

Product and accessories picture:



1. Assemble the separate storage box into a whole using the matching M6*16 screws, nuts, and flat washers (insert the small one into the large one and fix it with screws). As shown in picture:

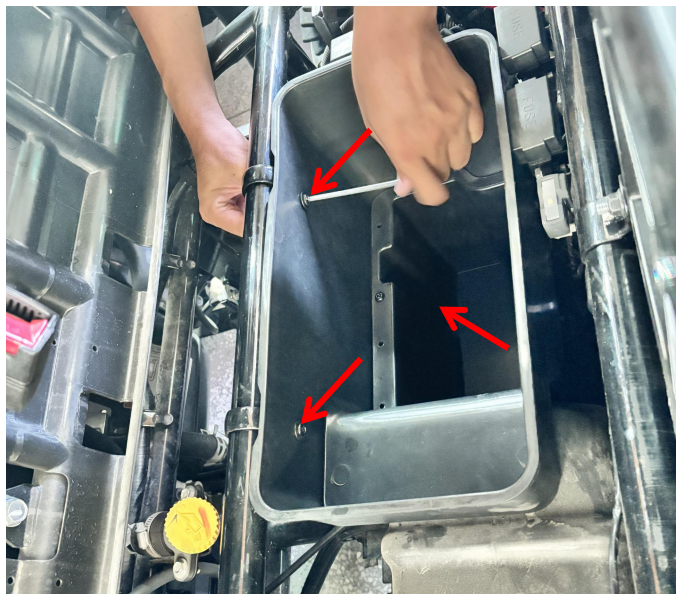
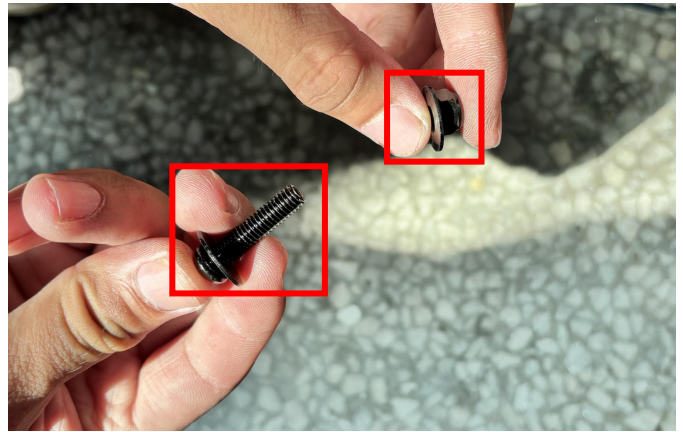


Under Seat Storage Box for Kawasaki Mule 4010

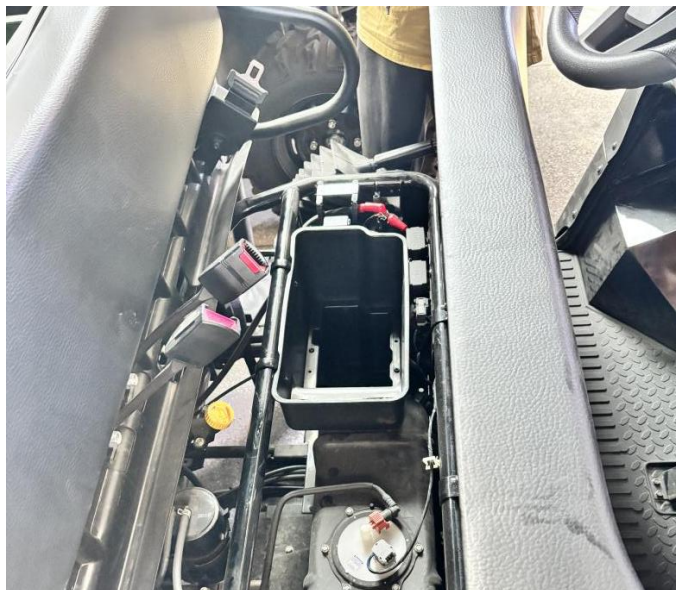


ZP-YJ-031008-0030

2. Open the original vehicle seat cushion, place the storage box in the reserved position, and then place 2 steel hoops in the corresponding screw holes of the storage box. Use M6*25 screws, nuts, and flat washers to fix them, and finally use M6*16 screws to reinforce the bottom of the storage box. As shown in picture:



3. Installation completed!



Note: Please refer to the installation video in the Amazon listing before your installation, or contact the seller for the installation video.