

BEFORE YOU BEGIN

Read these instructions and check to be sure all parts and tools are accounted for. Please retain these installation instructions for future reference.

The Rear trim panel is exclusively designed for your vehicle. Please read the installation instructions thoroughly before beginning. Installation is easier if the vehicle is clean and free of debris. For your safety, and to ensure a satisfactory installation, perform all installation steps correctly in the sequence shown.

INSTALLATION INSTRUCTIONS

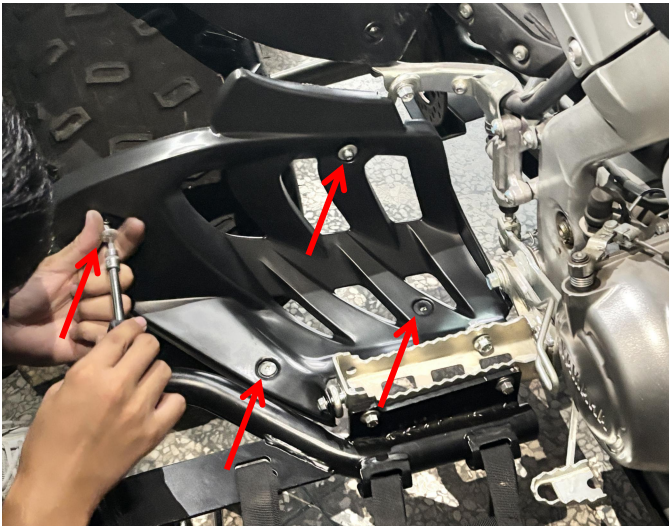
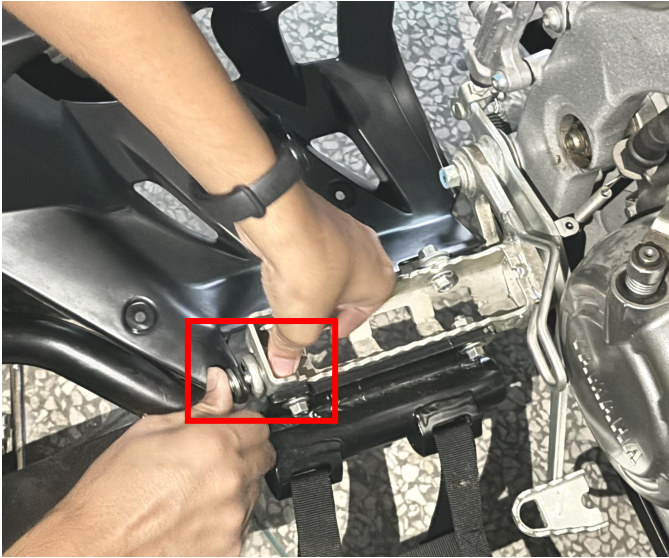
Note: Shift vehicle transmission into "PARK". Turn key to "OFF" position and remove from vehicle.

Product and accessories picture:



1. First, remove the original trim panel from the vehicle. Replace it with the new trim panel and secure it using the original screws (repeat the same procedure for the other side). As shown in picture:





2. Installation completed!



Note: Please refer to the installation video in the Amazon listing before your installation, or contact the seller for the installation video.