

# Front Half Doors for Can-Am Defender

YAP-030609-015

## BEFORE YOU BEGIN

Read these instructions and check to be sure all parts and tools are accounted for. Please retain these installation instructions for future reference.

## IMPORTANT

These Front Half Doors are exclusively designed for your vehicle. Please read the installation instructions thoroughly before beginning. Installation is easier if the vehicle is clean and free of debris. For your safety, and to ensure a satisfactory installation, perform all installation steps correctly in the sequence shown.

**Note:** Please refer to the installation video in the Amazon listing before your installation, or contact the seller for the installation video.

## INSTALLATION INSTRUCTIONS

Note: Shift vehicle transmission into "PARK". Turn key to "OFF" position and remove from vehicle.

Product and accessories picture:



1. Assemble Part 1 and Part 2 using six M6x16 hex socket screws, six M6 washers, and six M6 lock nuts. For the left circled section, use two M6x20 hex socket screws, two M6 washers, and two M6 lock nuts (as shown in the illustration). Do not fully tighten the screws.



2. Secure Part 3 to Part 1 using four M6x16 hex socket screws, four M6 washers, and four M6 lock nuts. Do not fully tighten the screws, as shown in the illustration.



# Front Half Doors for Can-Am Defender

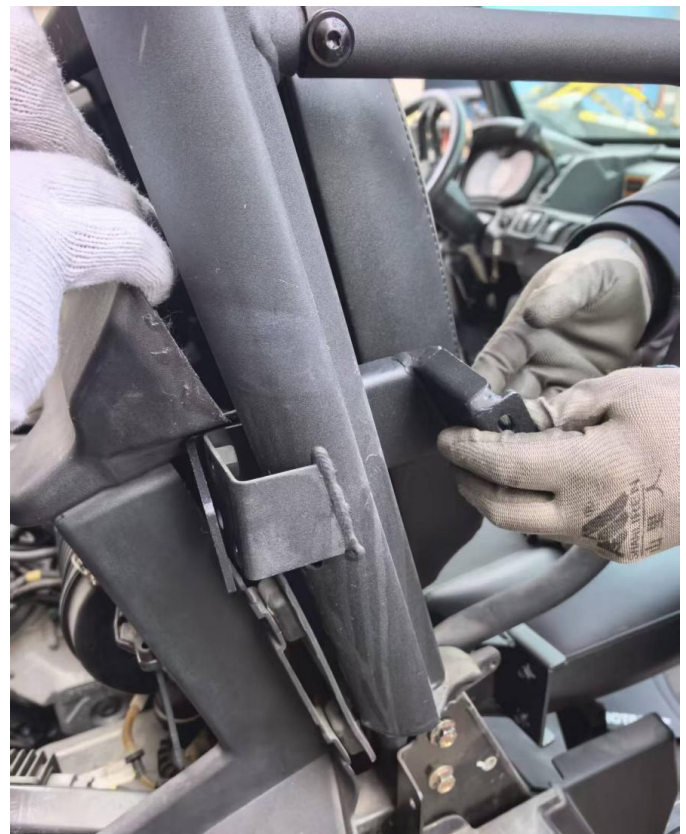
YAP-030609-015

## Installation Steps 3 and 4 for 2-Door Models:

3. Remove the two self-tapping screws from the front edge of the right door (keep the screws for later use). Then remove one screw and three sets of plastic clips from the rear plastic trim of the door, and take off the plastic trim (keep the removed screws and plastic trim for later use).



4. Pull open the plastic trim, then use two M8x20 flange hex bolts to install Part 4 onto the rear pillar.



# Front Half Doors for Can-Am Defender

YAP-030609-015



## Installation Steps 3 and 4 for 4-Door Models:

3. Remove the five screws from the rear plastic part of the front door and take off the plastic trim.

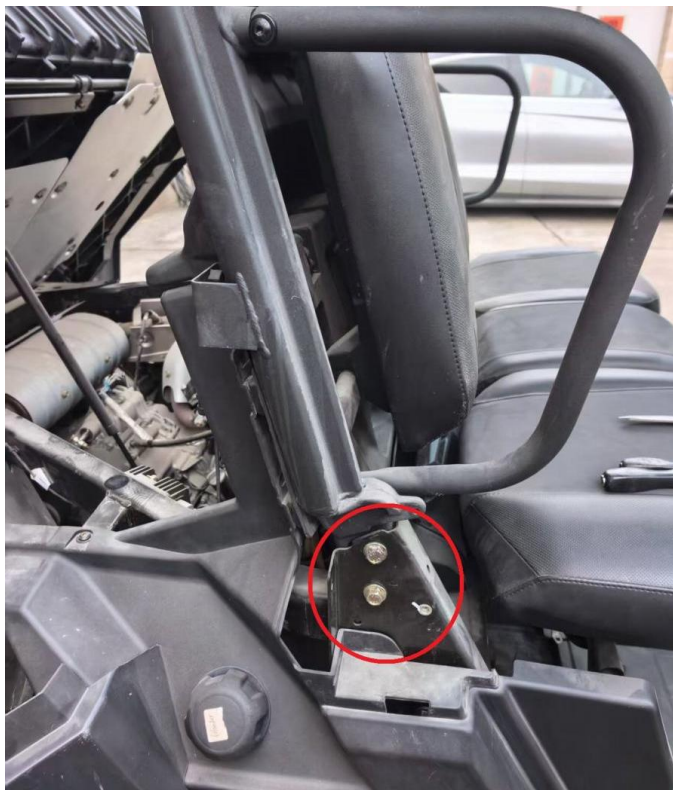
4. Secure part 4 to the rear pillar of the front door using two M8x20 flange hex head screws, then tighten the screws as shown in the illustration.



# Front Half Doors for Can-Am Defender

YAP-030609-015

5. Loosen the two screws at the rear of the seat, remove the nuts, then install part 5 and tighten the nuts as shown in the illustration.



6. Connect bracket 6, bracket 4, and bracket 5 using two M6x20 hex socket head screws, two M6 flat washers, and two M8x20 flange hex bolts. Do not fully tighten the fasteners.



# Front Half Doors for Can-Am Defender

## YAP-030609-015

7. Install part 7 onto the front door frame using two M8x20 flange hex bolts, then secure part 7 tightly with the two previously removed self-tapping screws.



push the lower hinge to the far right and tighten its three mounting screws. Next, secure the four screws on the door lock and tighten all remaining installation screws. Refer to the illustration.



8. Install the right door onto the hinges and tighten the door connecting screws as shown in the illustration.



9. After adjusting and locking the door lock position, push the upper hinge to the far left and tighten the three mounting screws. Then

10. Reinstall the rear plastic component using the one screw and three plastic clips that were just removed.

# Front Half Doors for Can-Am Defender

YAP-030609-015

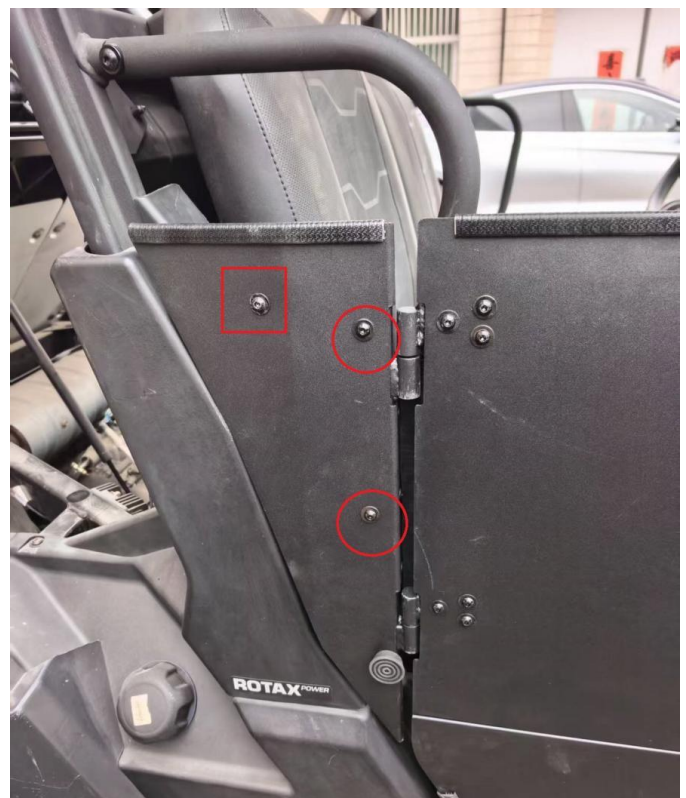
SAUTV5



12. Secure part 8 to bracket 6 using one M6x35 hex socket screw, two M6x20 hex socket screws, and three M6 flat washers. Tighten all screws to complete installation.



11. Secure the lower end of part 8 to bracket 6 using the limit spacer (part 9), as shown in the illustration.



# Front Half Doors for Can-Am Defender

YAP-030609-015

SAUTVS®



Note: The position of the door lock and hinges can adjust the door lock status.

