

Rear Half Doors for Can-Am Defender

YAP-030609-016

BEFORE YOU BEGIN

Read these instructions and check to be sure all parts and tools are accounted for. Please retain these installation instructions for future reference.

IMPORTANT

These Rear Half Doors are exclusively designed for your vehicle. Please read the installation instructions thoroughly before beginning. Installation is easier if the vehicle is clean and free of debris. For your safety, and to ensure a satisfactory installation, perform all installation steps correctly in the sequence shown.

Note: Please refer to the installation video in the Amazon listing before your installation, or contact the seller for the installation video.

INSTALLATION INSTRUCTIONS

Note: Shift vehicle transmission into "PARK". Turn key to "OFF" position and remove from vehicle.

Product and accessories picture:



1. Assemble Part 1 and Part 2 using five M6x16 hex socket screws, five M6 washers, and five M6 lock nuts. For the left circled section, use two M6x20 hex socket screws, two M6 washers, and two M6 lock nuts for

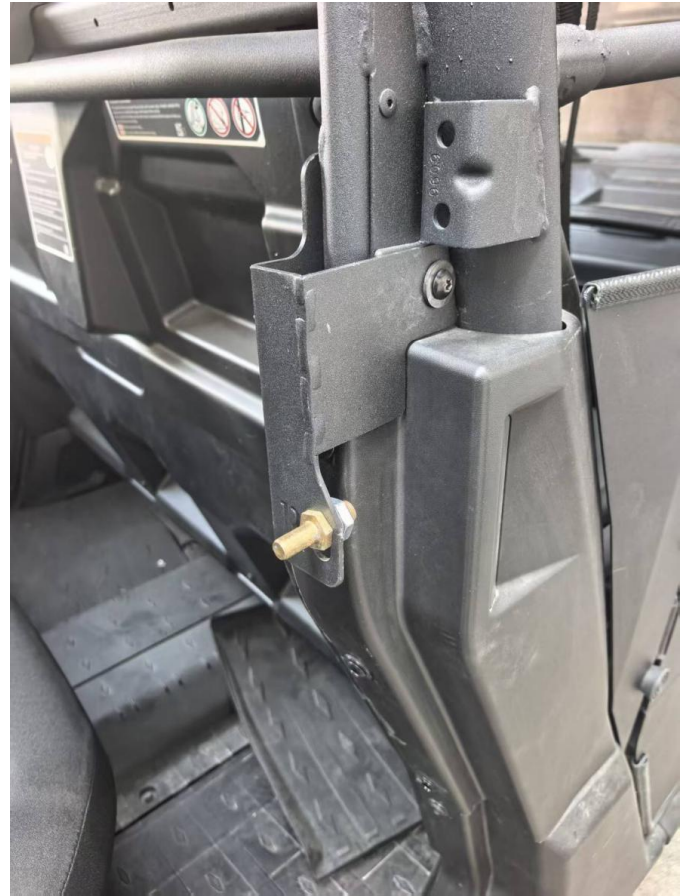
assembly. Tighten all screws as shown in the illustration.



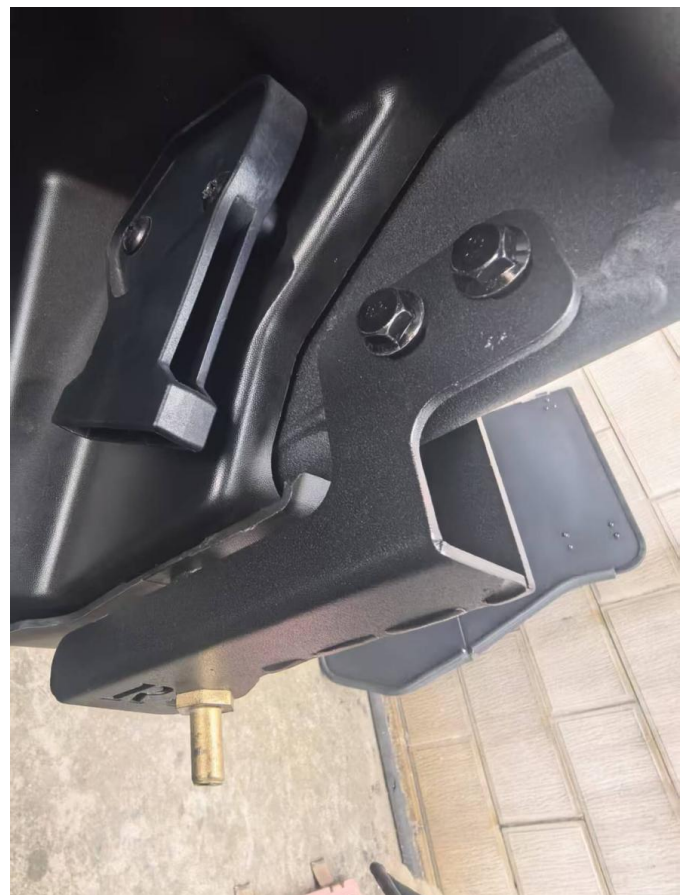
2. Secure Part 3 to Part 1 using four M6x16 hex socket screws, four M6 washers, and four M6 lock nuts. Do not fully tighten the screws, as shown in the illustration.

Rear Half Doors for Can-Am Defender

YAP-030609-016



3. Remove the screws from the center pillar of the rear door, then use the removed screws along with two M8x20 flange hex bolts to install Part 6 and tighten the screws as shown in the illustration.



4. Remove one screw and two sets of plastic

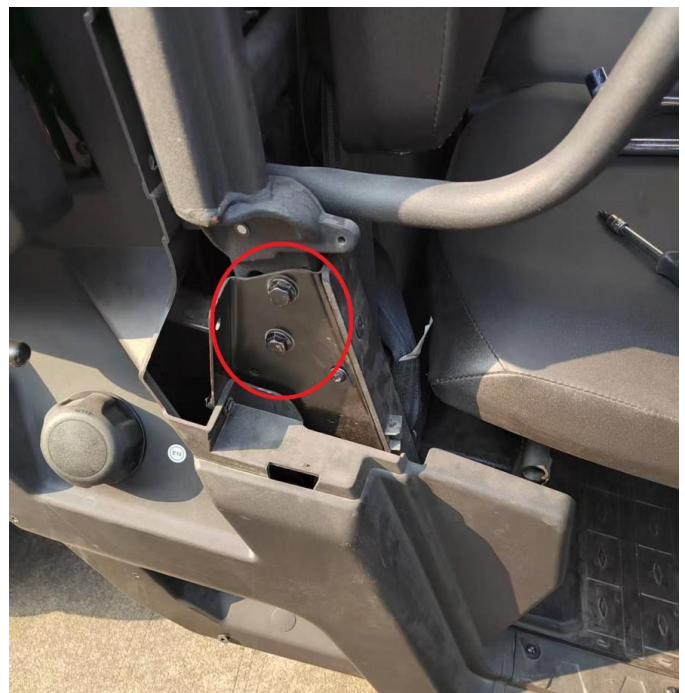
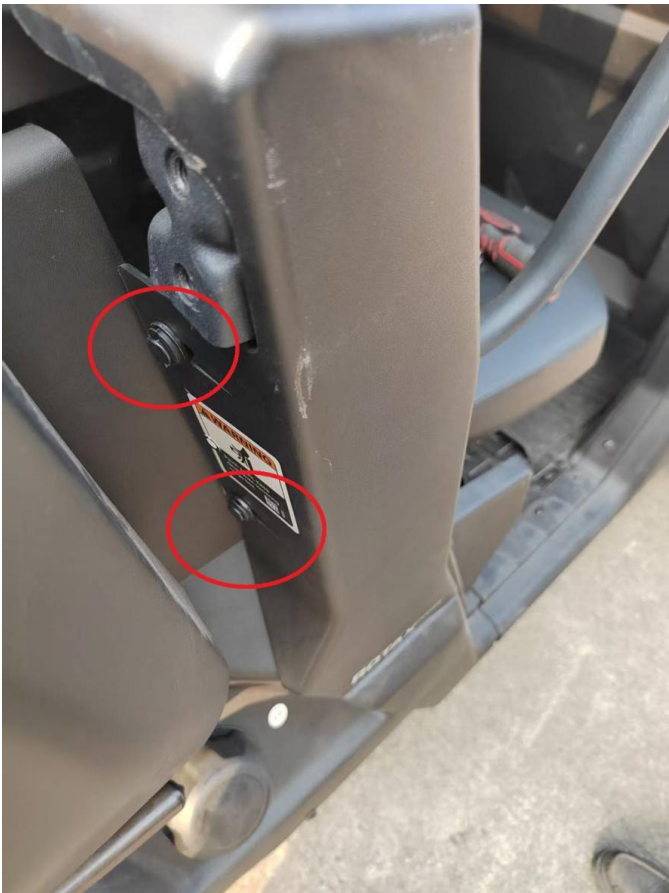
Rear Half Doors for Can-Am Defender

YAP-030609-016

parts from the rear plastic component, then detach the plastic parts as illustrated.



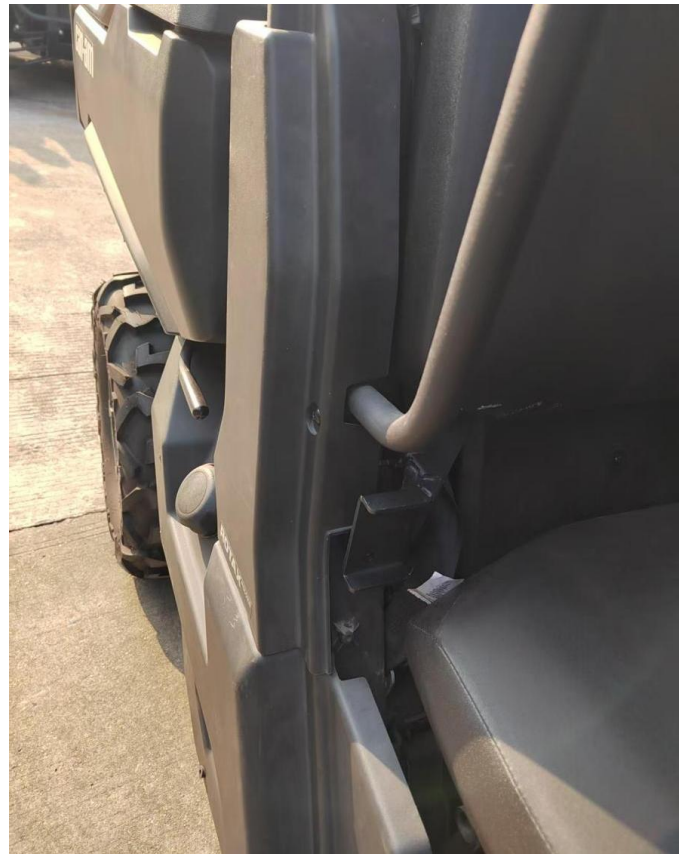
5. After replacing the screws of the original vehicle with two M8x80 flange hexagon screws, install bracket 4 by adding two aluminum columns at the inner screws and tightening the screws. Finally, reattach the plastic component using the removed screws and clips as shown.



Rear Half Doors for Can-Am Defender

YAP-030609-016

SAUTV5



6. Install the lower end of bracket 7 onto bracket 4 using two M8x20 flange hex screws, as shown in the illustration.



Rear Half Doors for Can-Am Defender

YAP-030609-016

7. Secure the lower end of bracket 5 to the rear pillar using two M8x20 flange hex bolts, and tighten as shown in the illustration.



9. Install the rear aluminum door onto the hinges, as shown in the illustration.

8. Secure the lower end of panel (Part 8) to bracket 7 using a limit spacer (Part 9), then attach panel (Part 8) to bracket 5 and bracket 7 with three M6x20 hex socket screws and three M6 flat washers. Do not fully tighten the screws, as illustrated.



Rear Half Doors for Can-Am Defender

YAP-030609-016

10. After adjusting the door lock cylinder to the proper position and securing it, push the top hinge of the door to the far left (toward the lock side) and tighten the 3 mounting screws. Then, push the bottom hinge to the far right (toward the hinge side) and tighten the 3 mounting screws. Finally, tighten the four screws on the door lock as shown in the illustration.

11. Check all screws and nuts for tightening and installation completion.

Note: The position of the door lock and hinges can adjust the door lock status.

