

Under Dash Speaker Pods for Kawasaki Mule PRO FXT



BEFORE YOU BEGIN

Read these instructions and check to be sure all parts and tools are accounted for. Please retain these installation instructions for future reference.

IMPORTANT

The Speaker Pod is exclusively designed for your vehicle. Please read the installation instructions thoroughly before beginning. Installation is easier if the vehicle is clean and free of debris. For your safety, and to ensure a satisfactory installation, perform all installation steps correctly in the sequence shown.

Note: Please refer to the installation video in the Amazon listing before your installation, or contact the seller for the installation video.

INSTALLATION INSTRUCTIONS

Note: Shift vehicle transmission into "PARK". Turn key to "OFF" position and remove from vehicle.

Product and accessories picture:

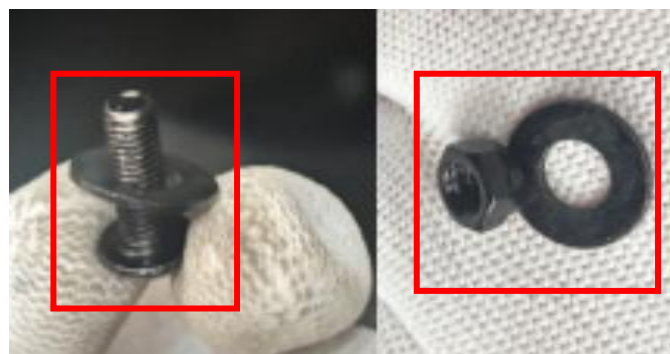
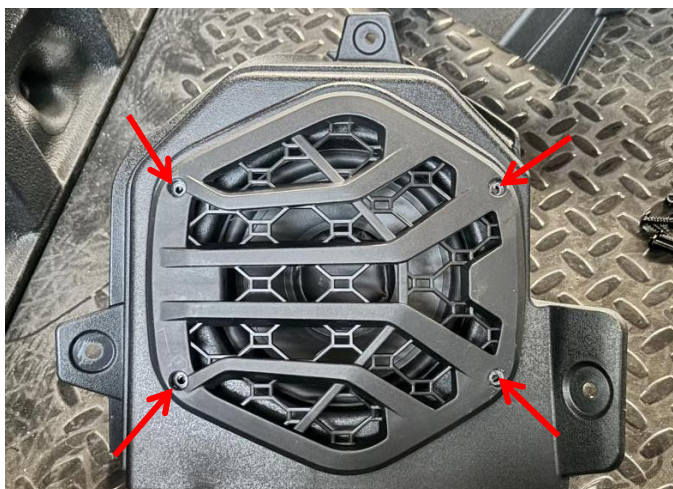
- Note:**
1. Support 6.5" speakers
 2. Speakers are not included in this product and need to be purchased by yourself.
 3. The following installation demonstrates the passenger side.



1. First, secure the speaker you provided to the speaker bracket, then install and fasten the decorative frame around the bracket (using 4mm self-tapping screws for both). As shown in picture:

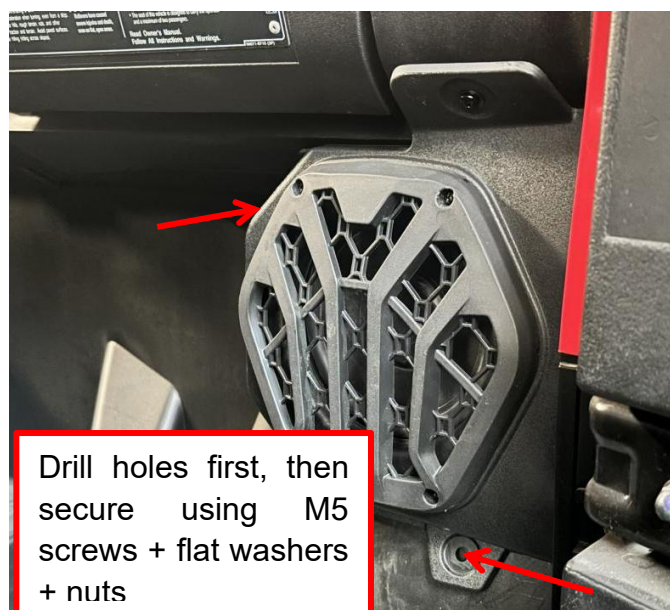


Under Dash Speaker Pods for Kawasaki Mule PRO FXT



2. Position the speaker bracket with the speaker installed beneath the original dashboard at the corresponding location. First, secure one mounting point on the bracket using the included 5mm self-tapping screws and flat washers. Next, prepare a 6mm drill bit and drill holes at the remaining mounting points on the bracket. Then, secure the bracket using M5 screws, flat washers, and nuts. (Repeat the same procedure for the other side.) As shown in picture:

Note: The speaker wiring harness requires the vehicle owner to perform the wiring connection themselves.



3. Installation completed!

