

Combined Front Lip for Club Car Tempo

ZP-YJ-041903-012

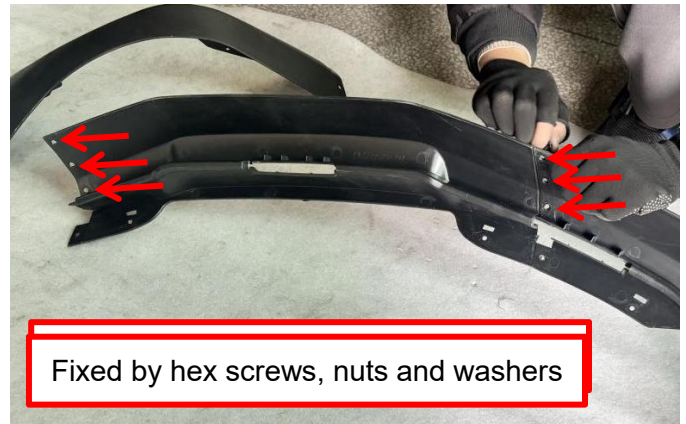
BEFORE YOU BEGIN

Read these instructions and check to be sure all parts and tools are accounted. Please retain these installation instructions for future reference.

This *Front Lip* is exclusively designed for your vehicle. Please read the installation instructions thoroughly before beginning. Installation is easier if the vehicle is clean and free of debris.

Note: Please refer to the installation video in the Amazon listing before your installation, or contact the seller for the installation video.

PRODUCT



INSTALLATION INSTRUCTIONS

1. Shift vehicle transmission into "PARK". Turn key to "OFF" position and remove from vehicle.
2. First, use the provided screws and nuts to assemble the split front lip into a complete unit. As shown in the figure:

Note: Use M3 control arm bolts to fasten at the illustrated positions, and use button head hex screws for all other locations.



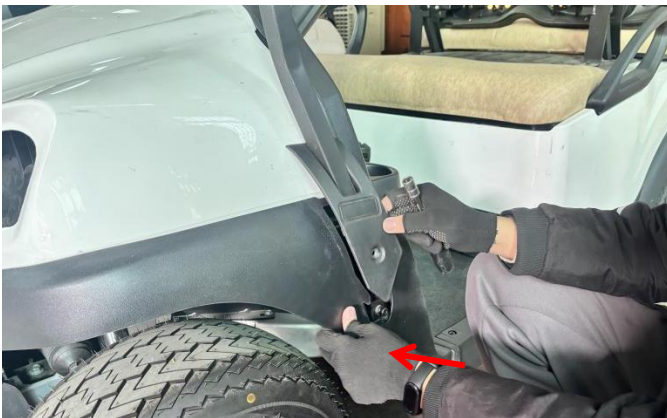
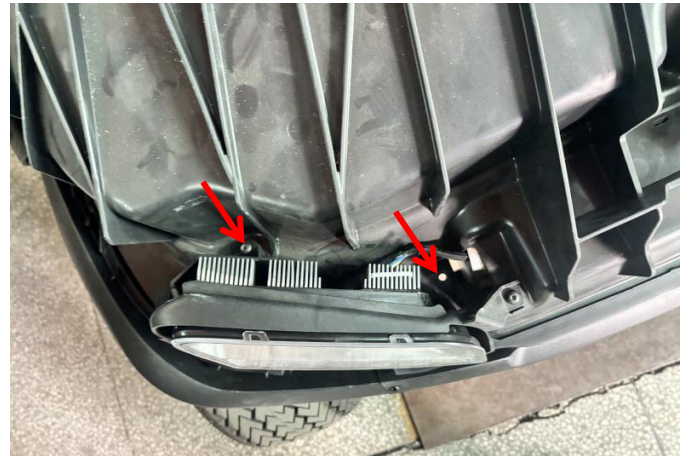
3. Remove the original front cover and the decorative trim on the edge of the cover. As shown:

Combined Front Lip for Club Car Tempo

ZP-YJ-041903-012

SAUTV^{VS}

4. Remove the original headlights and front lip. As shown:



5. Install the assembled new front lip back onto the vehicle and secure it using the original screws. Then reinstall the original headlights, front cover, and other accessories. As shown:
Note: When reinstalling the front cover, align and securely insert the positioning tabs of the cover into

Combined Front Lip for Club Car Tempo

ZP-YJ-041903-012

the corresponding slots on the front lip until fully engaged.



6. The installation is complete.

