

Front Floor Mat for Club Car DS Golf Cart

ZP-YJ-041904-005

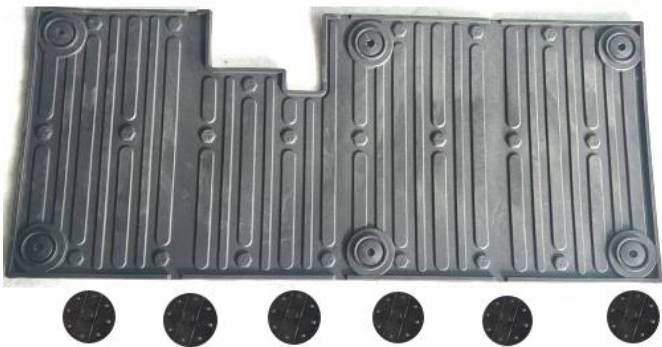
BEFORE YOU BEGIN

Read these instructions and check to be sure all parts and tools are accounted. Please retain these installation instructions for future reference.

This *front floor mat* is exclusively designed for your vehicle. Please read the installation instructions thoroughly before beginning. Installation is easier if the vehicle is clean and free of debris.

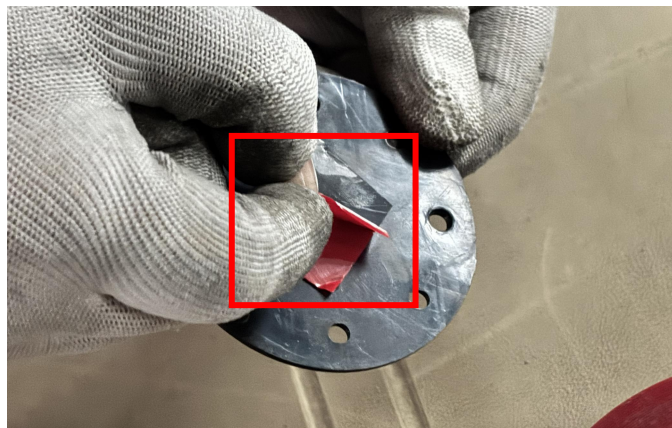
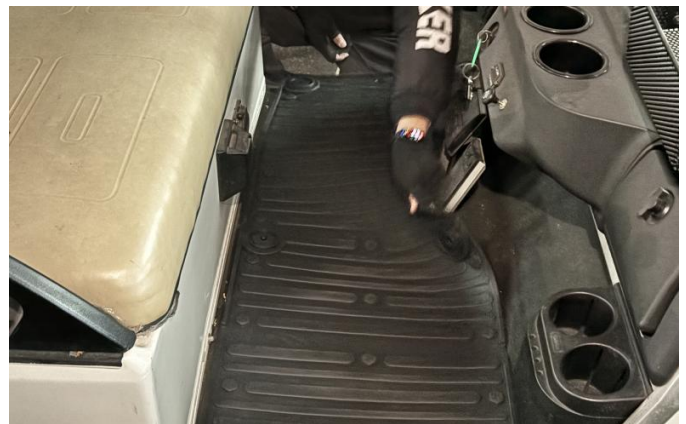
Note: Please refer to the installation video in the Amazon listing before your installation, or contact the seller for the installation video.

PRODUCT



INSTALLATION INSTRUCTIONS

1. Shift vehicle transmission into "PARK". Turn key to "OFF" position and remove from vehicle.
2. First, attach the six adhesive-backed mounting clips to the vehicle (do not press too firmly yet). Then lay out the floor mat and check if the clips positions align with the mat's mounting points. If misaligned, re-adjust the adhesive clips to the correct position before removing the mat. As shown:



3. Prepare a 3MM drill bit and select any four screw holes on the mounting clips to drill. Then secure them using the provided self-tapping screws. After installing all six clips, reposition the floor mat onto the vehicle and lock it in place with the clips. As shown:



Front Floor Mat for Club Car DS Golf Cart

ZP-YJ-041904-005

SAUTV5



4. The installation is complete.

