

Daytime Running Light for Can-Am Outlander 1000R 2025

SAUTVS®

BEFORE YOU BEGIN

Read these instructions and check to be sure all parts and tools are accounted. Please retain these installation instructions for future reference.

This *Daytime Running Light* is exclusively designed for your vehicle. Please read the installation instructions thoroughly before beginning. Installation is easier if the vehicle is clean and free of debris.

Note: Please refer to the installation video in the Amazon listing before your installation, or contact the seller for the installation video.

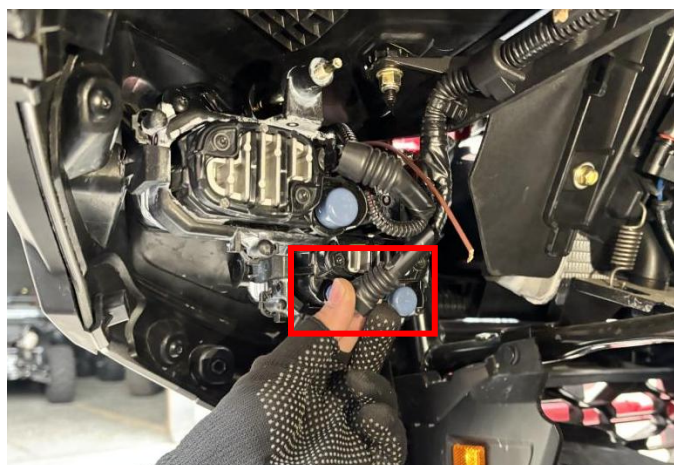
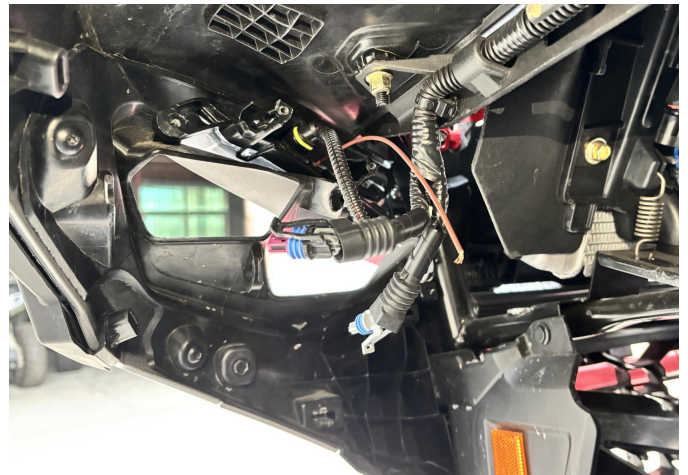
PRODUCT



INSTALLATION INSTRUCTIONS

1. Shift vehicle transmission into "PARK". Turn key to "OFF" position and remove from vehicle.
2. First, remove the original headlight assembly and disconnect its wiring harness connectors. As shown:

Note: This manual demonstrates the installation process using the left-side daytime running light as an example.

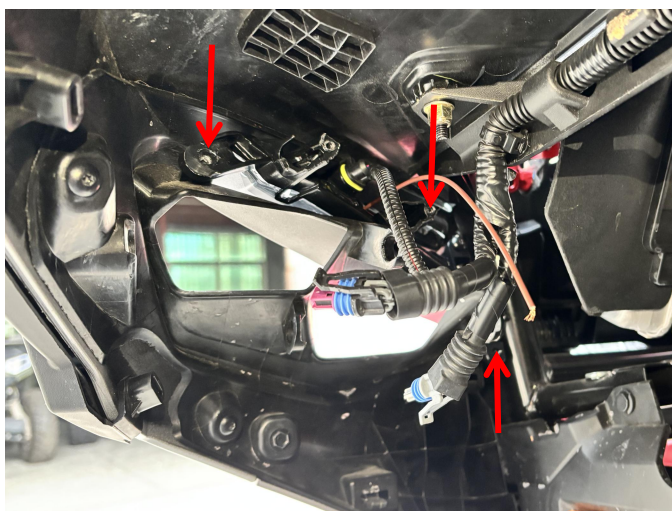


3. Remove the original daytime running light and disconnect its wiring harness connector. Then install the new daytime running light, reconnect the wiring harness, and secure it using the original vehicle screws. Finally, reinstall the original headlight assembly. As shown:

Note: For the installation of the other side daytime running light, please repeat steps 2 and steps 3.

Daytime Running Light for Can-Am Outlander 1000R 2025

SAUTVS®



4. The installation is complete!

Note: This daytime running light comes with a built-in turn signal function. To activate this feature, the customer needs to provide their own turn signal controller system.

